



Canadian  
Coast Guard

Garde côtière  
canadienne

# Canadian Coast Guard Ops Update

---

May 2024



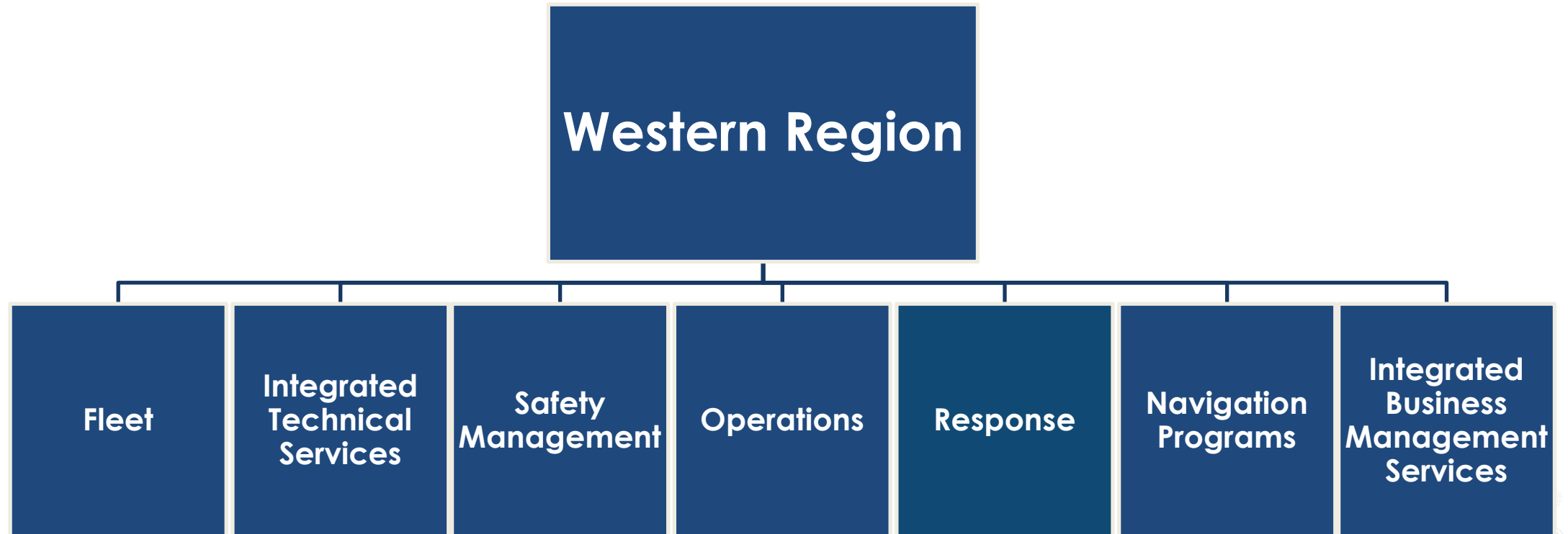
# Canadian Coast Guard



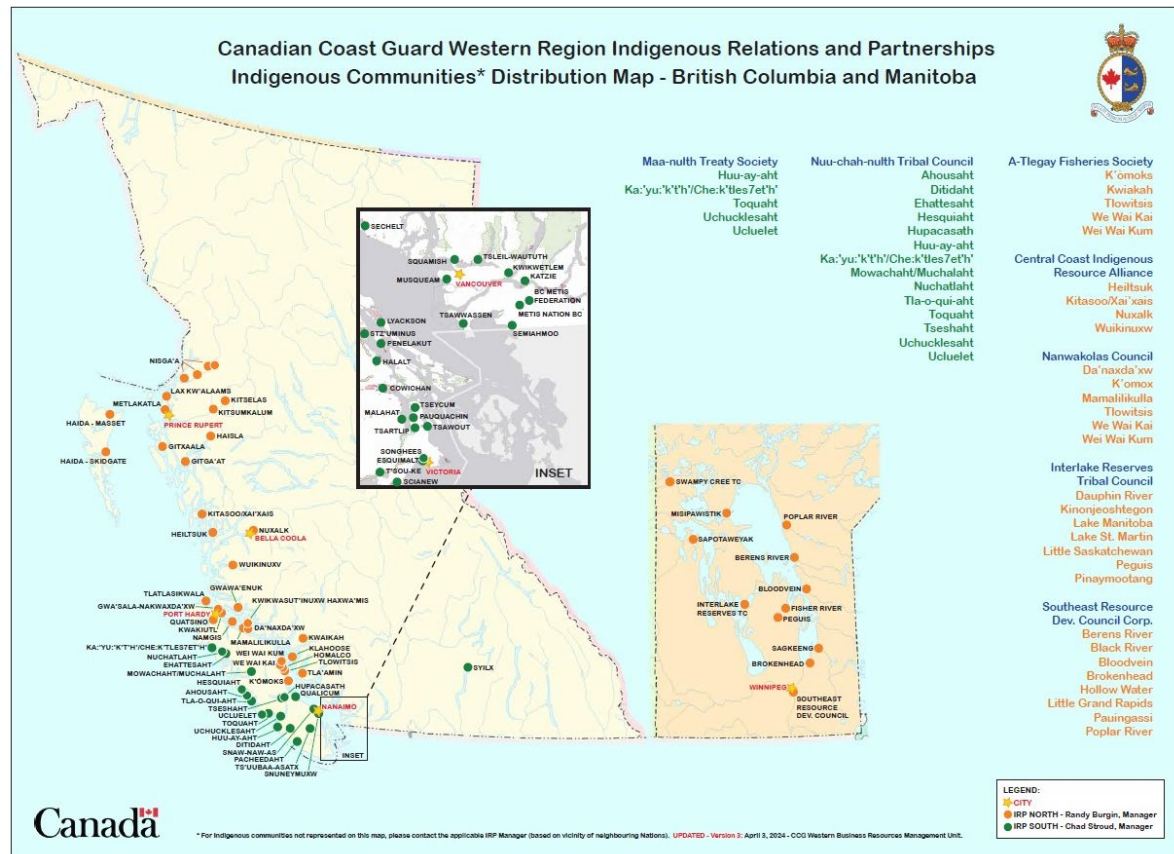
- 16 Shore Stations
- 13 Large vessels
- 2 Air Cushioned Vehicles
- 8 Helicopters
- 4 MEHR Depots
- 27 Staffed Lightstations
- 1403 Staff



# Canadian Coast Guard Structure

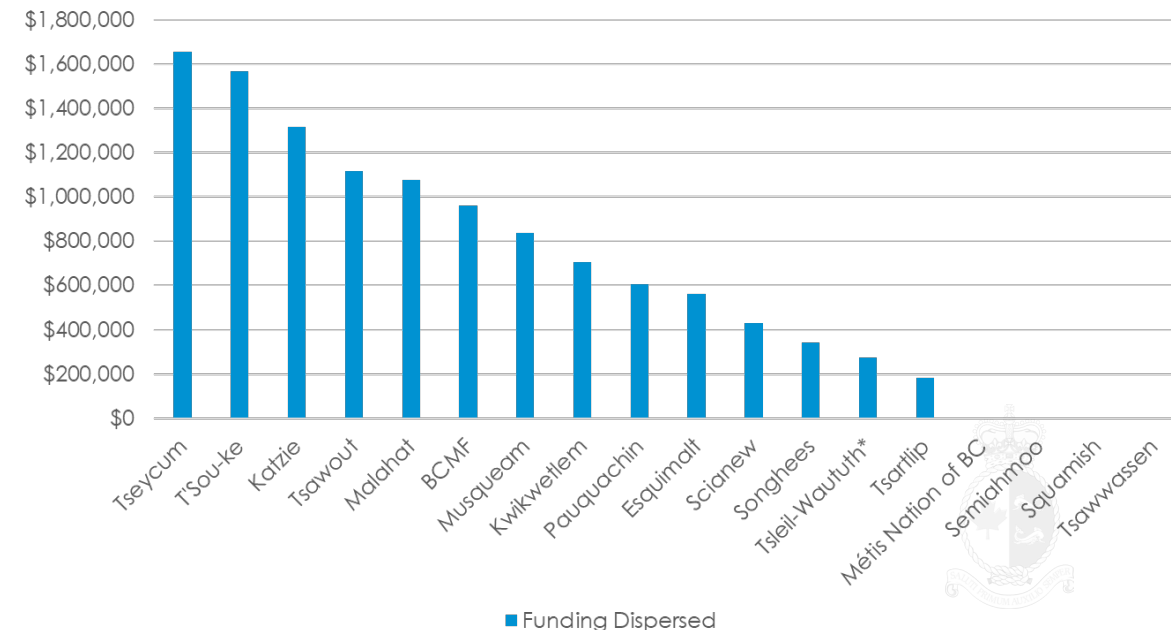


# Indigenous Relationships and Partnerships



## Co-Developing Community Response Accommodation Overview:

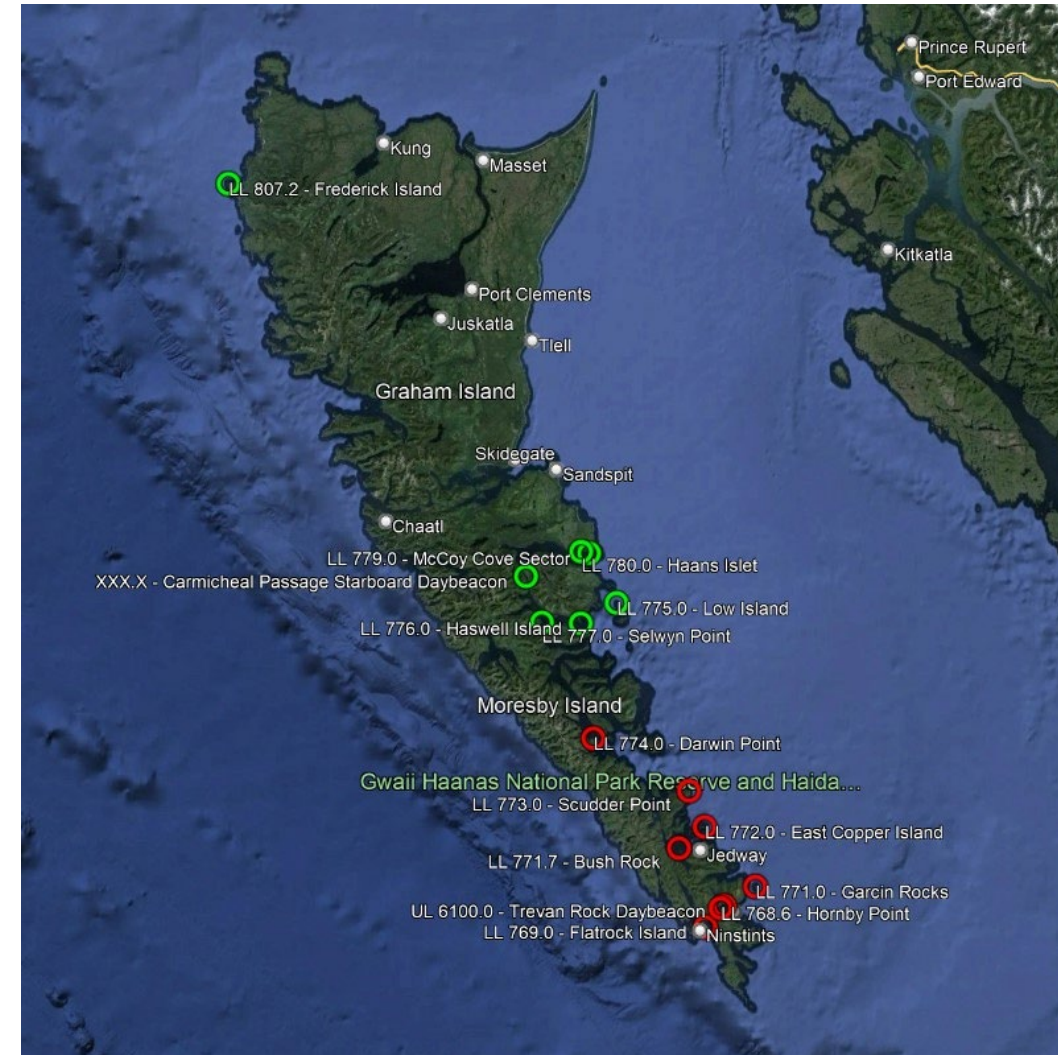
- 33 Nations eligible for funding
- IRP South co-developing and finalizing 13 work plans worth \$ 3.54M





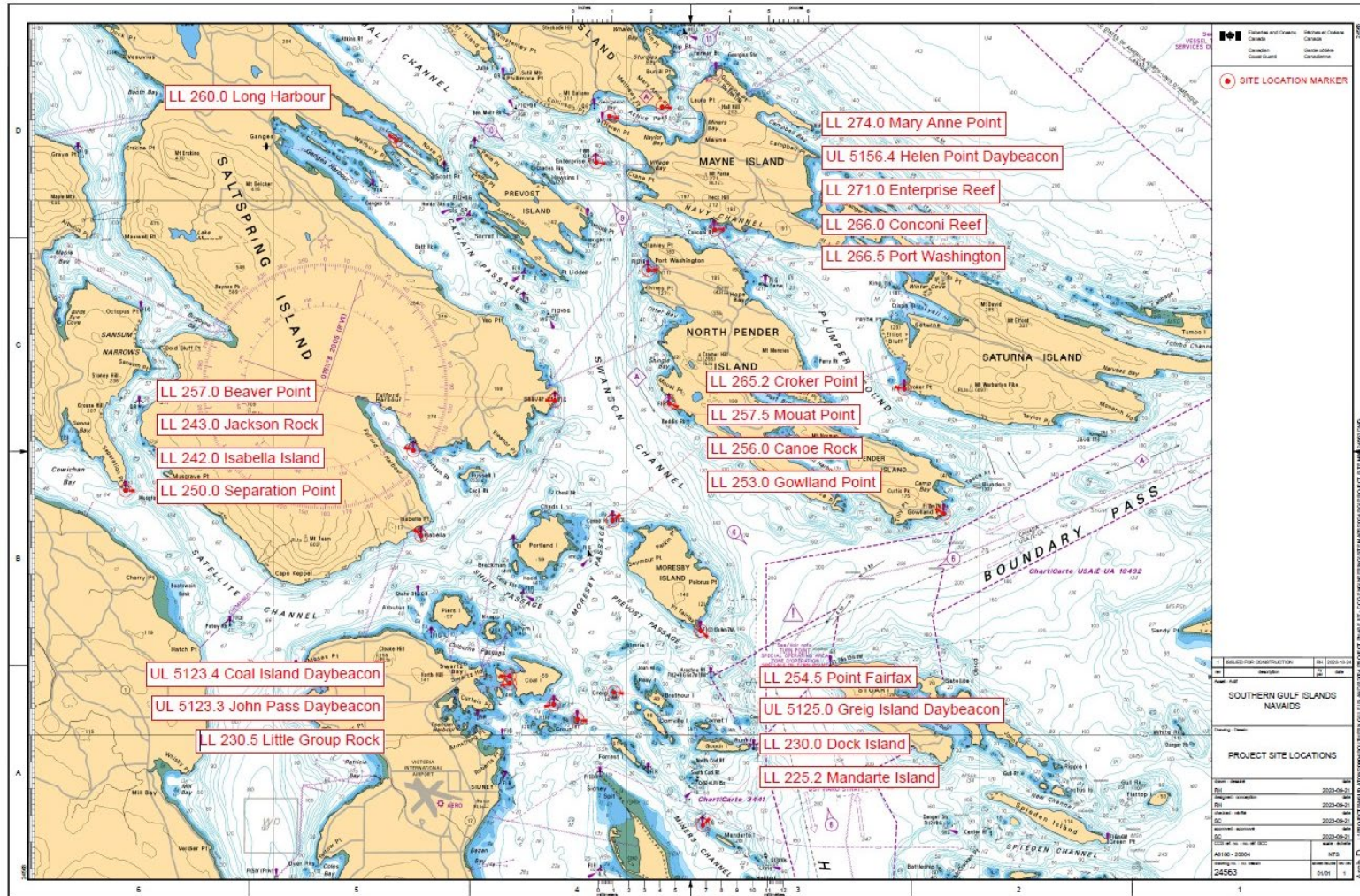
# Integrated Technical Solutions(ITS): Haida Gwaii

## Haida Gwaii Helipad Installation and Navigational Aid Replacement Project





# Integrated Technical Solutions (ITS): Southern Gulf



Project: Southern Gulf  
Island Aids to Navigations  
Rebuilt Project

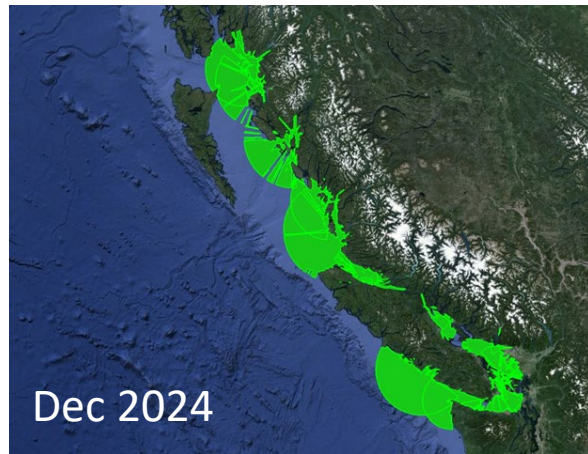
Construction Period: May  
22nd - June 21st, 2024





# MCTS – Marine Domain Awareness Projects

## MCTS Radar Coverage

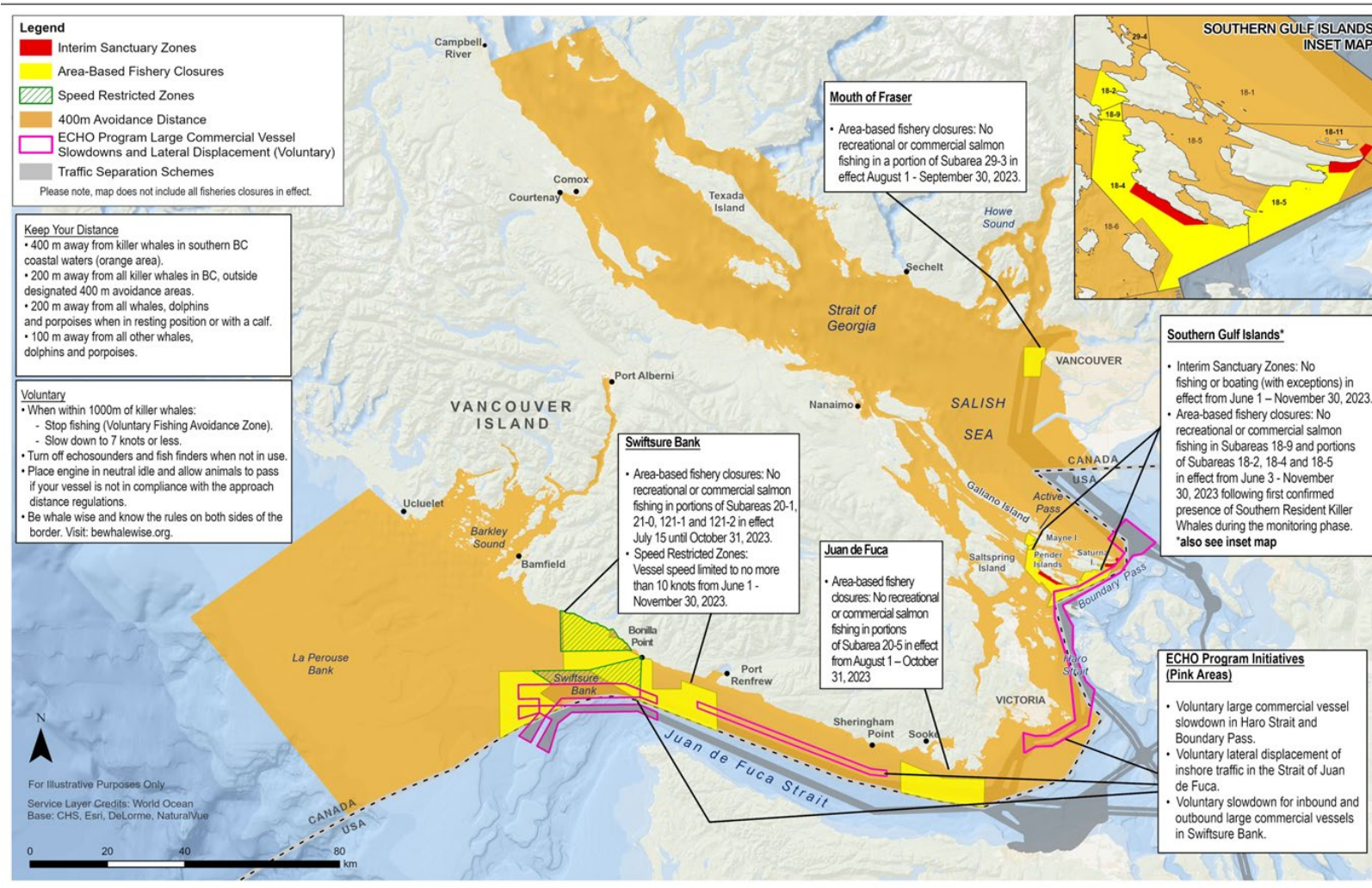


## VTMIS Project

8 Functional Requirements of the 24/7/365 VTMIS “umbrella”



# MCTS Marine Mammal Desk



- Contributes directly to marine mammal protection efforts in BC waters, particularly through support of Transport Canada's Interim Order for the Protection of Killer Whales, and the Port of Vancouver's ECHO Program voluntary slowdowns.
- Continues to engage with other U.S. based initiatives such as Quiet Sound to work on cross-border SRKW management.
- Currently still seeking permanent staffing funding after April 1, 2026.





# MCTS Automated Vessel Traffic Management Program



## Centralized scheduling system



Implementing a port-wide centralized scheduling system to better manage ship traffic and fully utilize existing capacity within our maritime supply chain



## Anchorage management



Seeking innovative ways to manage anchorage capacity and demand to reduce impacts on coastal communities and the environment



### Strengthened marine safety

Reducing congestion and actively managing marine traffic in the busiest, most confined waters of the port



### Reduced environmental impacts

Reducing noise impacts to southern resident killer whale habitat by limiting unnecessary vessel movements



### Improved efficiency and reliability of the flow of goods

Optimizing processes through the gateway, such as vessel-scheduling, for all supply-chain partners



### Minimized social impacts

Reducing overall anchorage usage in southern BC and implementing a Code of Conduct for vessels at anchorage



# Fleet Update



## High-Endurance Search and Rescue Lifeboats:

- The lifeboats are 19 metres in length and weigh 75 gross tonnes.
- The vessels have a cruising speed of 14 and a half knots, and a top speed of 25 knots.
- These high-endurance vessels are capable of traveling 100 nautical miles offshore and are able to self-right if capsized.



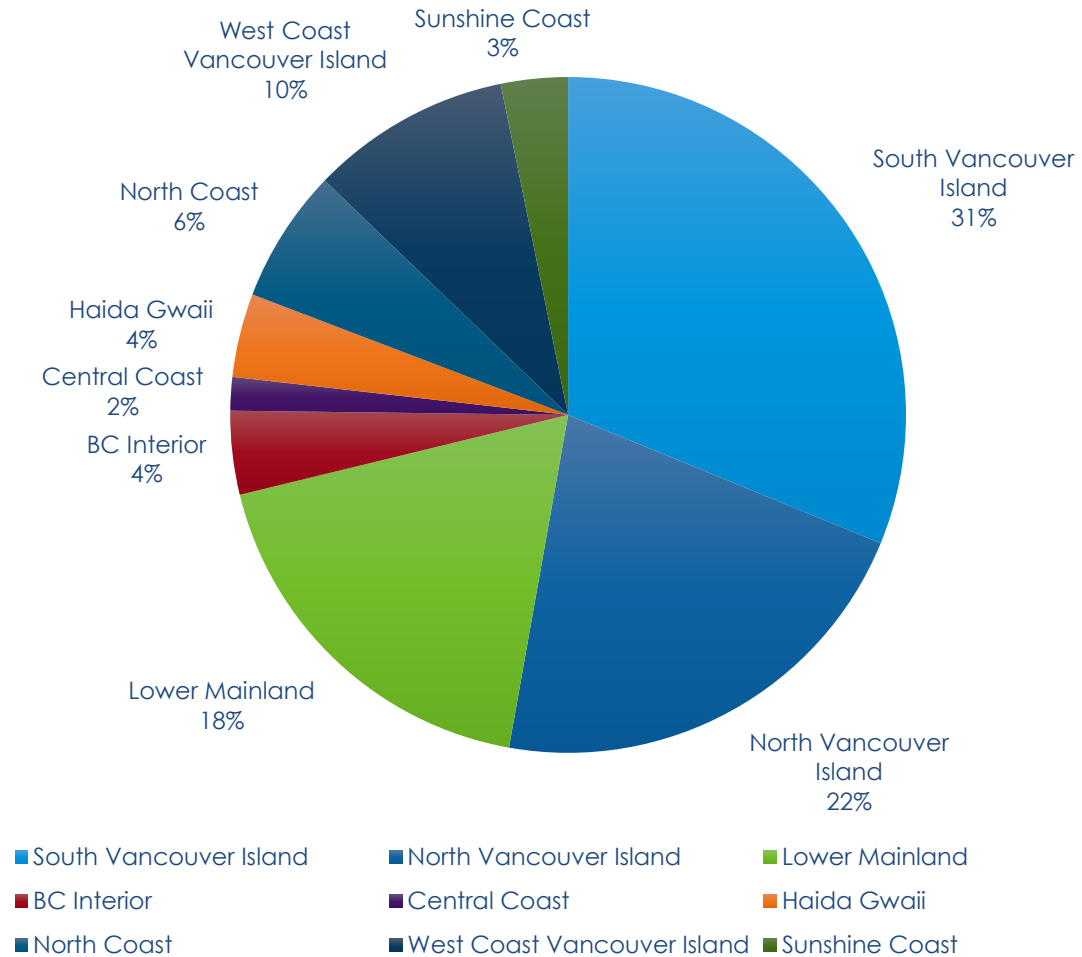
- CCG Western Region is supporting IUU missions annually, operating in international waters
- Operations include international partners such as Japan Coast Guard, Korea Coast Guard, and the United States Coast Guard, DFO Fisheries Officers





# Response Realignment – MEHR and C&E

**Sub Regional Case Location 2023-2024**



# Major Exercises 2024 - 2025

## Recent Activity

- Salish Unity Workshop, Feb. 2024
- Exercise Painter Joust, Mar. 2024
- Hatch Point Oil-Handling Facility (OHF) Exercise, May 2024

## Upcoming Exercises

- PACIFEX, May 2024
- Campbell River Functional Ex., Oct. 2024
- CANUSPAC 2024, Nov. 2024
- Pacific Integration, Nov. 2024
- Salish Unity TTX, Feb. 2025



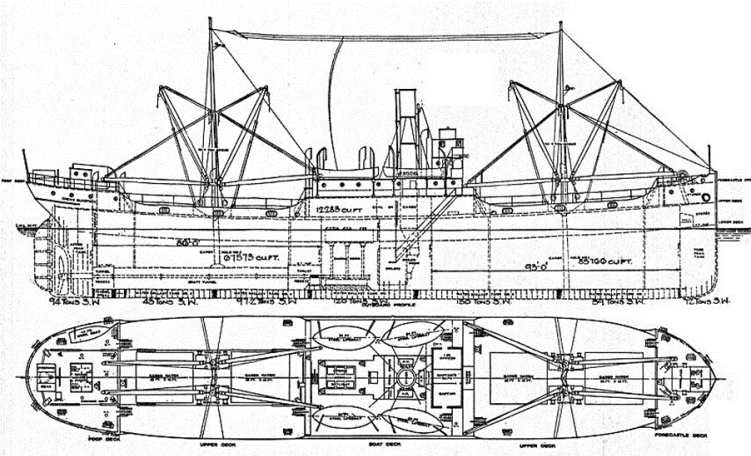


# USAT Zalinski Operation 2024



- Sank in 1946 with a potential of 700 tonnes of bunker fuel on board
- Began upwelling in early 2000's
- Zalinski 1 operation 2013 – Removed 49 tonnes of bunker fuel using hot tapping with divers.
- Zalinski 2 Operation 2015 – Removed 3.3 tonnes of bunker fuel using divers
- Zalinski 3 Operation 2018 – Removed 2.5 tonnes of bunker fuel using divers and tank flushing.
- September and October 2022 – increase in the amount reports of hydrocarbons on the water in the vicinity of the wreck site.

EFC Design 1093: 4200 D.W.T. Steel Cargo Ship, American S.B. Co. Design



# Emergency Tow Vessels



## Summary of Taskings since November 2018

• Vessels towed	22
• Stood by vessels disabled or in difficulty	26
• Medevac from a vessel	9
• Medevac from shore	6
• Searches	13
• Assisted grounded vessels	6
• Rescued crew	5
• Escorted a vessel in difficulty	10
• Other assistance	18
• Investigate an incident scene	16





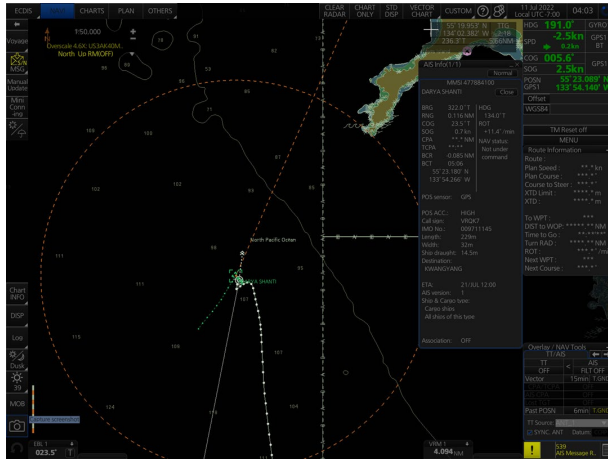
# ETV Taskings by Vessel Type



• Tankers	2
• Cargo ships, other	44
• Deep-sea trawlers	7
• Fishing vessels, other	27
• Yachts	15
• Tugs	5
• Barges	3
• Passenger vessels	2
• Commercial vessels, other	1
• Person without a vessel	1
• Community assistance (shore)	2



# ETV Darya Shanti – July 2022





# ETV Additional Incidents

**Taking CSL TECUMSEH in tow, December 2022**

**(ATLANTIC EAGLE)**



**The jammed rudder of CSL TECUMSEH December 2022**



**Deep-Sea Ship MAERSK SANTANA, 138,000 tonne displacement container ship broken down and subsequently anchored on La Perouse Bank. Drift rate had been 3.5 knots.**

**ATLANTIC EAGLE stood by until commercial tug LAUREN FOSS arrived on scene and then provided an escort to Slip Point whereupon propulsion was restored and the ship proceeded under its own power.**



**June 2023, Deep-Sea Ship BRIGHTON, 100,000 tonnes displacement, disabled in Boundary Pass.**

**ATLANTIC EAGLE stood by until repairs were made.**





# YOU'RE INVITED: OPEN HOUSE AT INSTITUTE OF OCEAN SCIENCES

Saturday June 8, 2024

- Tour a Coast Guard ship and learn about search & rescue and marine safety
- Participate in hands-on science and explore new technologies in DFO labs
- Learn about earthquakes from NRCan
- Discover jobs at sea and in the lab
- Participate in fun games & activities for kids!

**WHEN:** Saturday June 8<sup>th</sup>, 2024

**TIME:** 9:00 am – 3:00 pm

**WHERE:** Institute of Ocean Sciences,  
9860 West Saanich Road, Sidney BC

**WHO:** Everyone Welcome!

The ship may not be accessible to all visitors  
Closed-toed shoes are required

*On-site parking limited, free shuttle from off-site parking available.*





Canada