



# Marine Users Working Group

Presented By: Fraser Crossing Partners and  
Transportation Investment Corporation

June 26, 2025

# Welcome

- Review of May 29 Meeting Minutes
- Navigation Log
- Project Update
- River Monitoring Update
- 4 Week Look-Ahead Schedule
- Roundtable Discussion
- Next Steps

# Review of Meeting Minutes

## May 29, 2025

# Meeting Minutes – May 29, 2025

- FCP provided a Project update:
  - Construction activity at SM-012 of 20 segments to be completed.
  - Continuing to install precast panels in SB 12 and counterweight the construction to cantilever the bridge over main span.
  - Cable stays erection and steel installation over the Fraser River ongoing.
  - Center barrier pours and the parapets on the sides of the of the back span ongoing. Precast panel installation ongoing.
- FCP provided a River Monitoring Update:
  - Freshet occurring with significant impact on scouring, sedimentation and subsequently on marine navigation and river volumes.
  - Changes noted in and around the CN Rail bridge, pier 5, and the swing span with a deepening of scour in the area. A bit of infill is also observed further south in the future navigational channel, which continue to be monitored.
- FCP provided a Demolition plan update:
  - Work in three main scopes - deck removal, steel truss removal and in river pier removal. Bridge deck removal is above the water and the methods remain the same. Updated methods were presented that would limit the number of cuts and reduce interferences to navigation, and indigenous fisheries.
  - In-river pier removal will be completed using conventional demolition, combined with equipment on a flexi float, and barges to contain the materials. Which reduces the duration of the works in navigable waters (from of 4-6 weeks to 12-36 hours).
- FCP provided a 4-week look-ahead:
  - Segment SM-013 to start June 6 - Segment SM-014 scheduled to start June 22– Segment SM-015 scheduled to start July 11. All 2-3 weeks duration, with no interferences to navigation in these periods.
- Round Table:
  - Mark Jourdenais (DFO) requested contact information for the lead on the new Fraser River tunnel crossing.

# Navigation Log

## Marine Occurrences as a Result of the Project

*\*No updates to report*

# Project Update

## Works in Progress



# Project Update

## S1 Tower and Cantilever Construction



Photo 1: Main span - cable stay – main span progress to North Approach



Photo 2: Concrete overlay main span to South Approach



# Project Update

## South Approach Girder/Deck Panels Installation



Photo 3: South Approach-end span- main span connection and cable stay installation ongoing



Photo 4: South Approach-end span deck panel installation and concrete overlay



# Project Update

## N1 Tower and North Approach Girder Installation



Photo 5: North Approach connection to main span (SM-014) ongoing



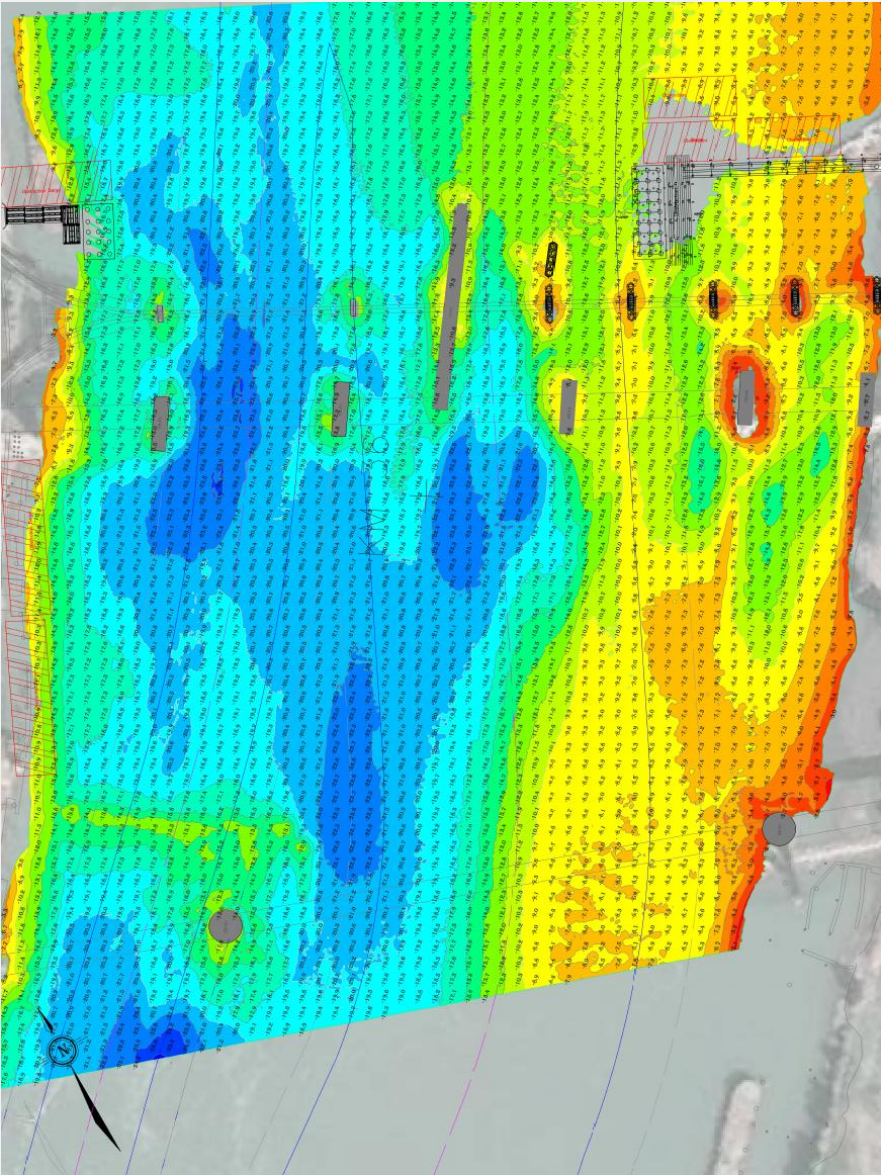
Photo 6: Ongoing girder and panel installation for the North Approach

# River Monitoring Update

## Monitoring Results



# Bathymetry Monitoring Survey Results – June 9, 2025



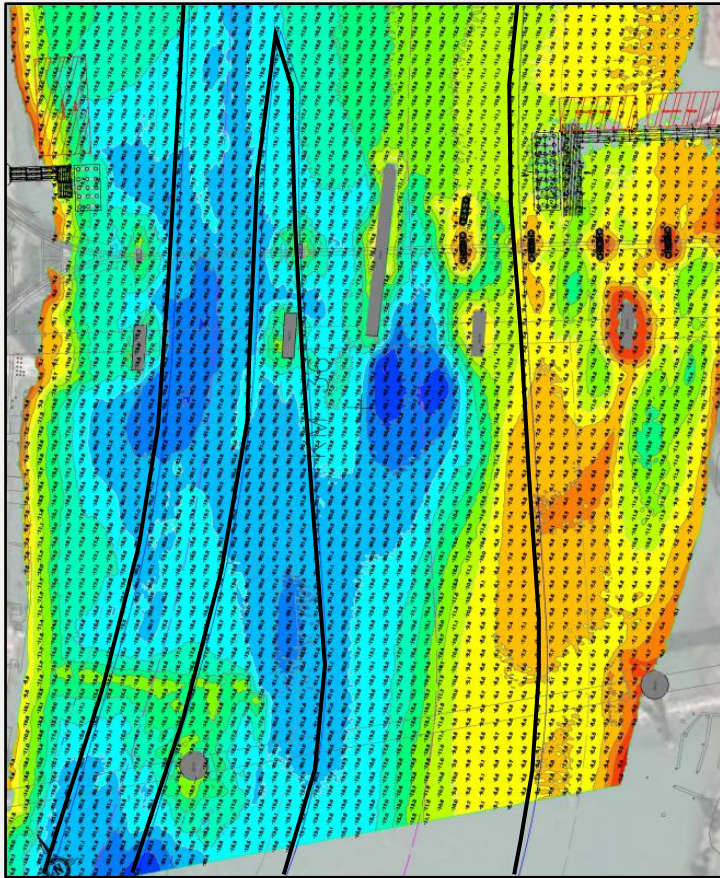
Elevations Table			
Number	Maximum Elevation	Minimum Elevation	Color
14	0.00	−2.00	Red
13	−2.00	−4.00	Orange
12	−4.00	−6.00	Yellow
11	−6.00	−8.00	Light Green
10	−8.00	−10.00	Green
9	−10.00	−12.00	Light Blue
8	−12.00	−14.00	Blue
7	−14.00	−16.00	Dark Blue
6	−16.00	−18.00	Very Dark Blue
5	−18.00	−20.00	Black
4	−20.00	−22.00	Dark Grey
3	−22.00	−24.00	Medium Grey
2	−24.00	−26.00	Light Grey
1	−26.00	−28.00	White



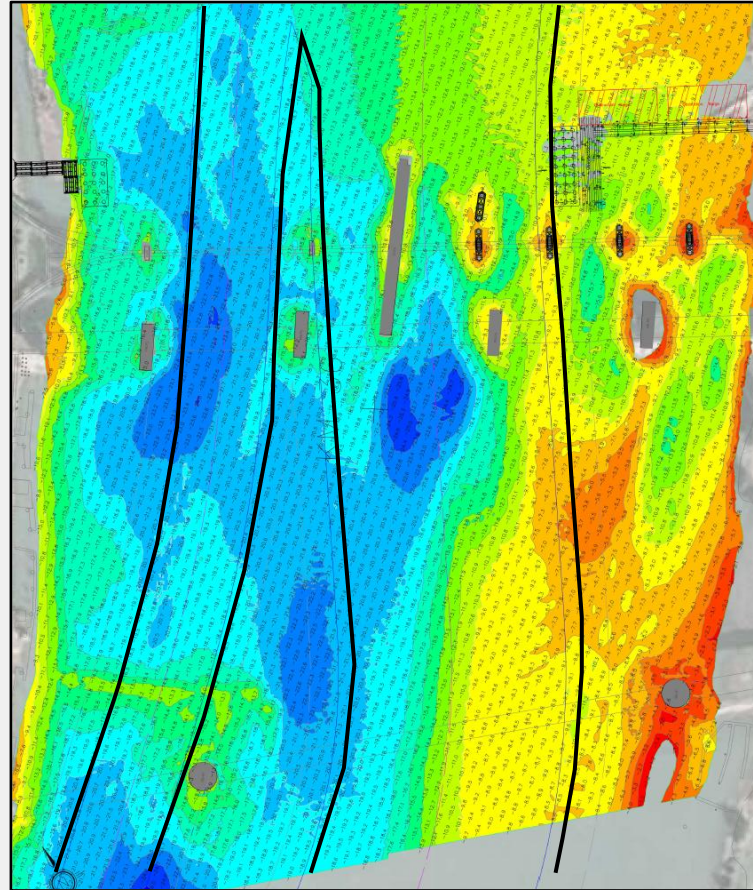
# Bathymetry Results:

## Comparison of Survey Results - Sep 2024 to Jun 2025

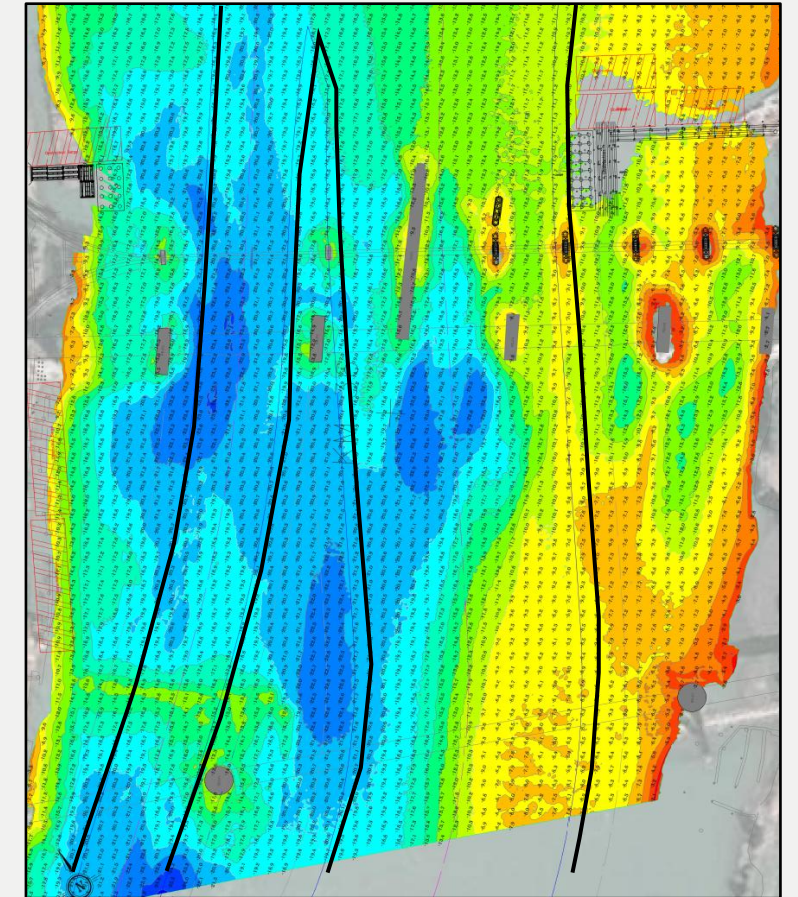
Elevations Table			
Number	Maximum Elevation	Minimum Elevation	Color
14	0.00	-2.00	Red
13	-2.00	-4.00	Orange
12	-4.00	-6.00	Yellow
11	-6.00	-8.00	Light Green
10	-8.00	-10.00	Green
9	-10.00	-12.00	Light Blue
8	-12.00	-14.00	Blue
7	-14.00	-16.00	Dark Blue
6	-16.00	-18.00	Very Dark Blue
5	-18.00	-20.00	Black
4	-20.00	-22.00	Dark Grey
3	-22.00	-24.00	Medium Grey
2	-24.00	-26.00	Light Grey
1	-26.00	-28.00	White



September 23, 2024



February 10, 2025



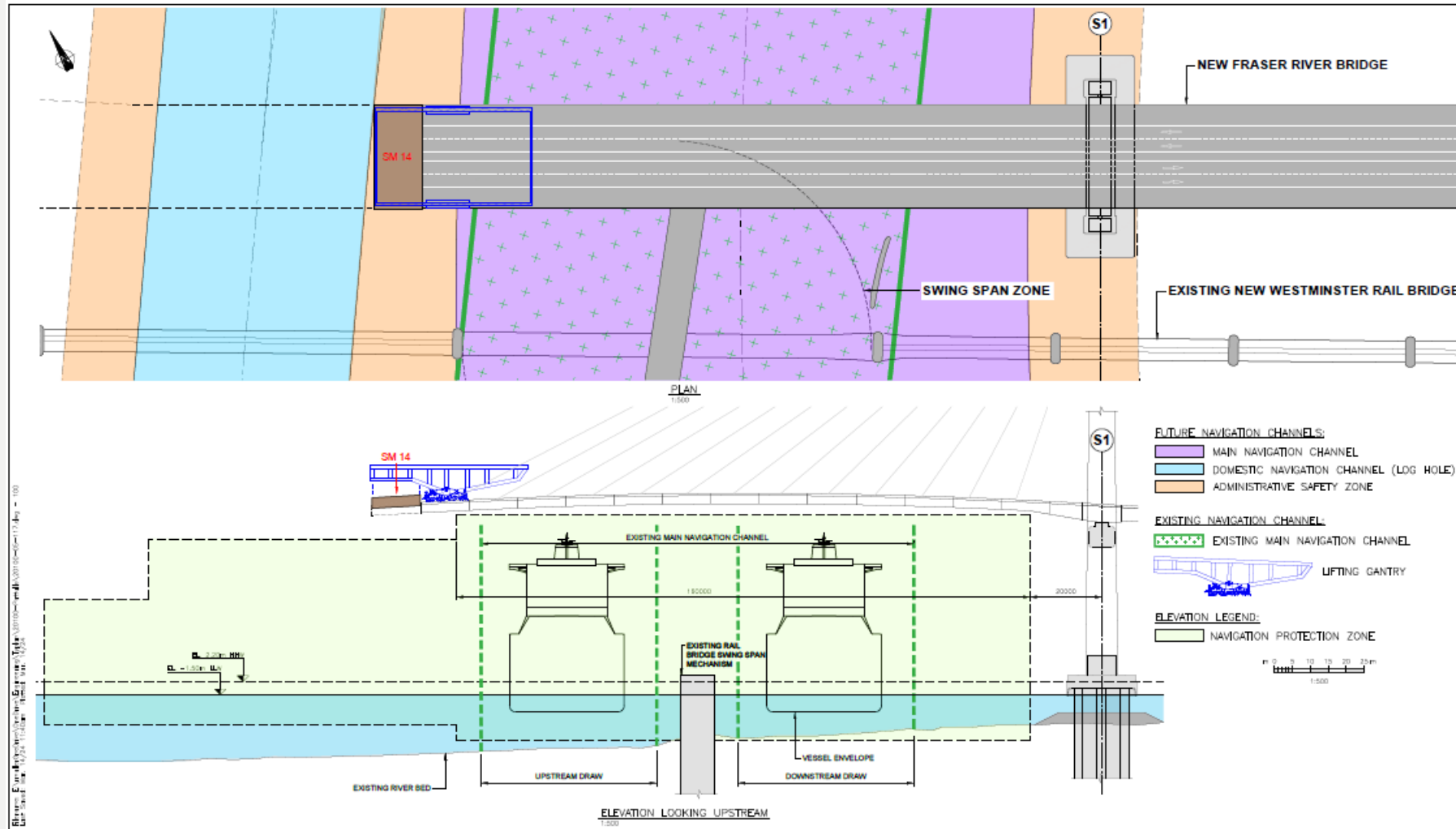
June 9, 2025

# 4-Week Look-Ahead / Construction Staging



# Construction Staging – Cantilever Construction

## Segment SM-014

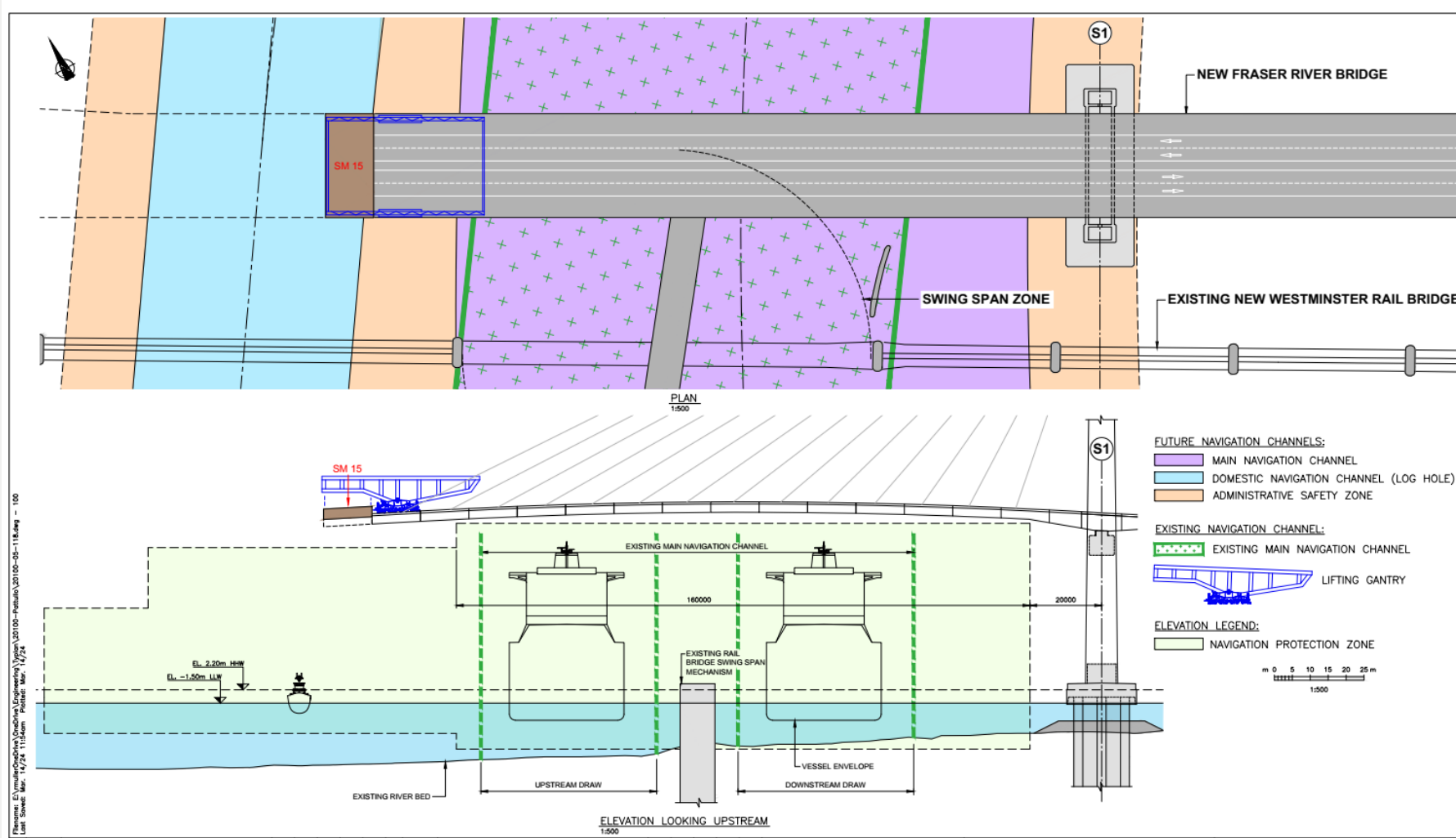


- Started week of June 9
- 2-3 week duration
- No interference to navigation



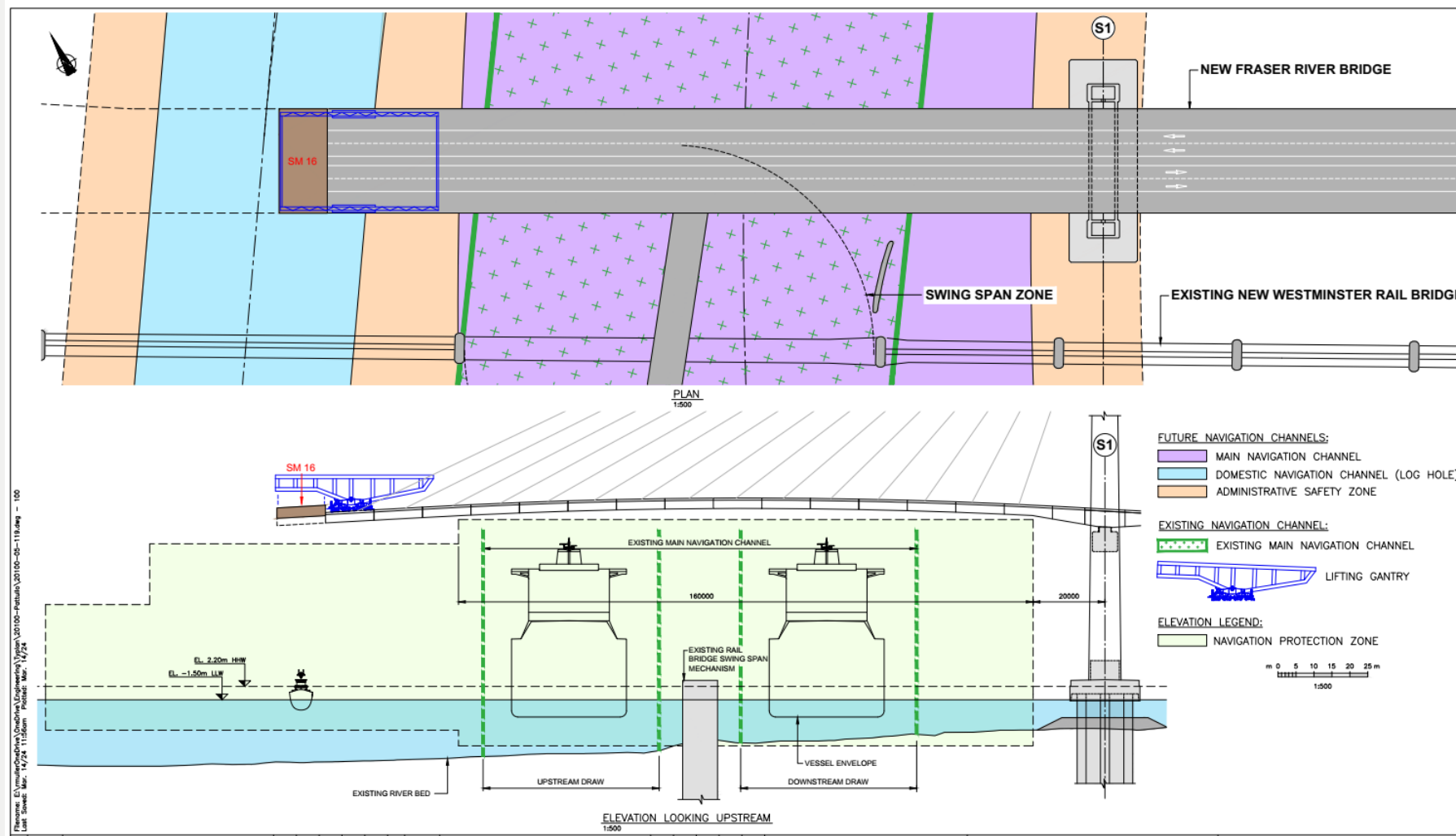
# Construction Staging – Cantilever Construction

## Segment SM-015



- Starting Jul 8
- 2-3 week duration
- Restrictions in the domestic navigation channel (approx. 11 hours, cumulative)

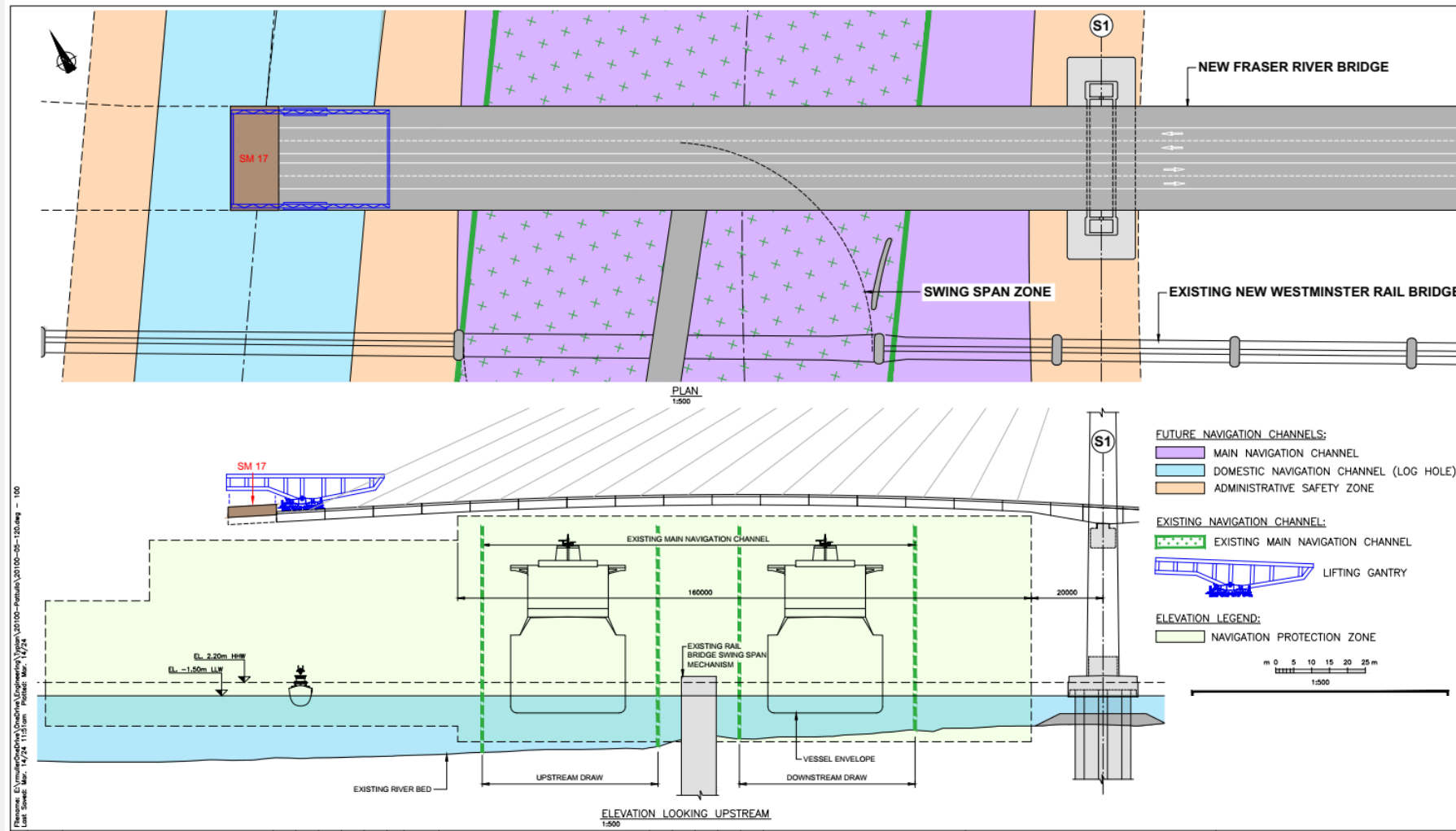
# Construction Staging – Cantilever Construction Segment SM-016



- Starting Jul 21
- 2-3 week duration
- Restrictions in the domestic navigation channel (approx. 11 hours, cumulative)

# Construction Staging – Cantilever Construction

## Segment SM-017

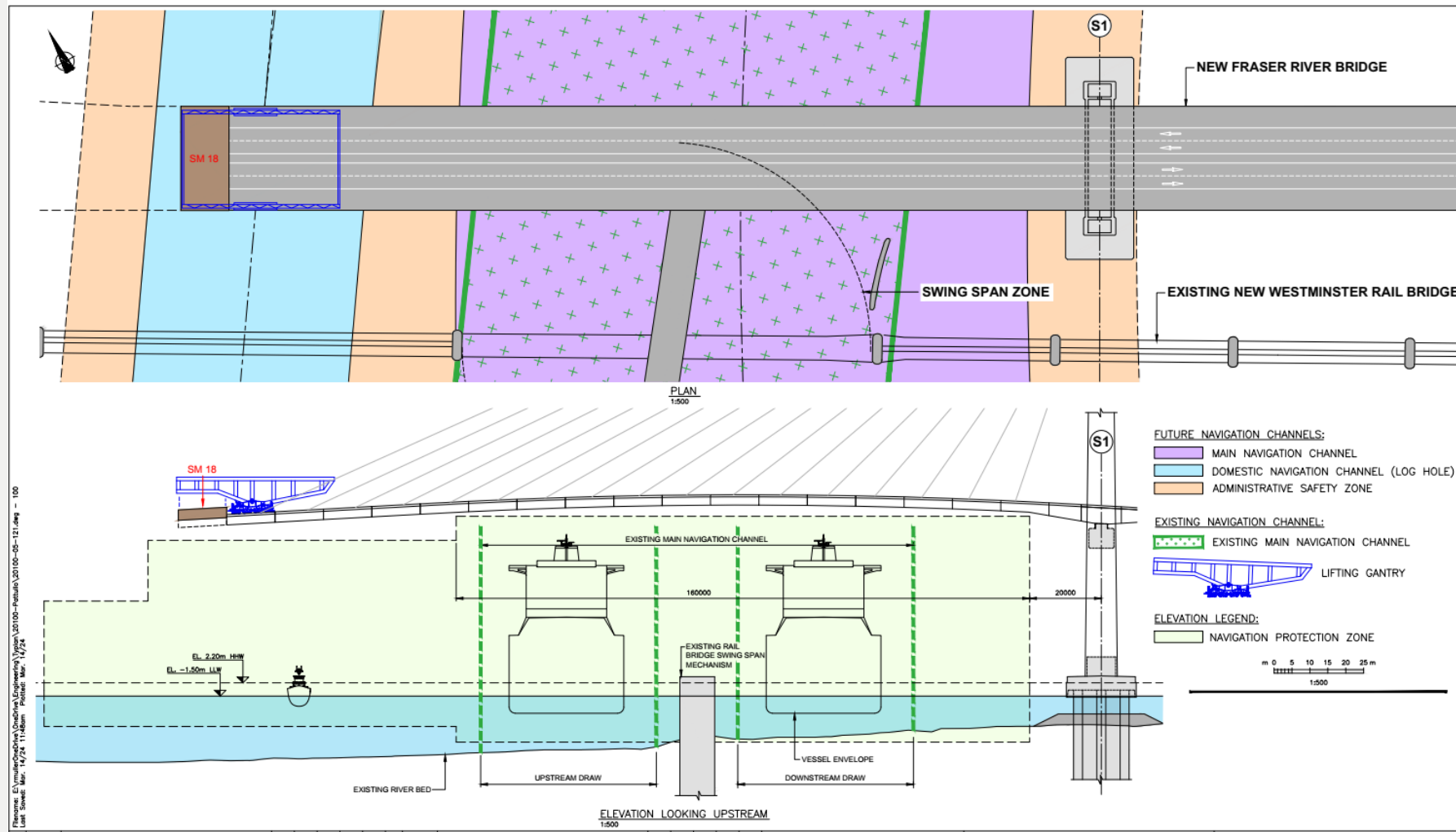


- Starting Aug 04
- 2-3 week duration
- Restrictions in the domestic navigation channel (approx. 11 hours, cumulative)



# Construction Staging – Cantilever Construction

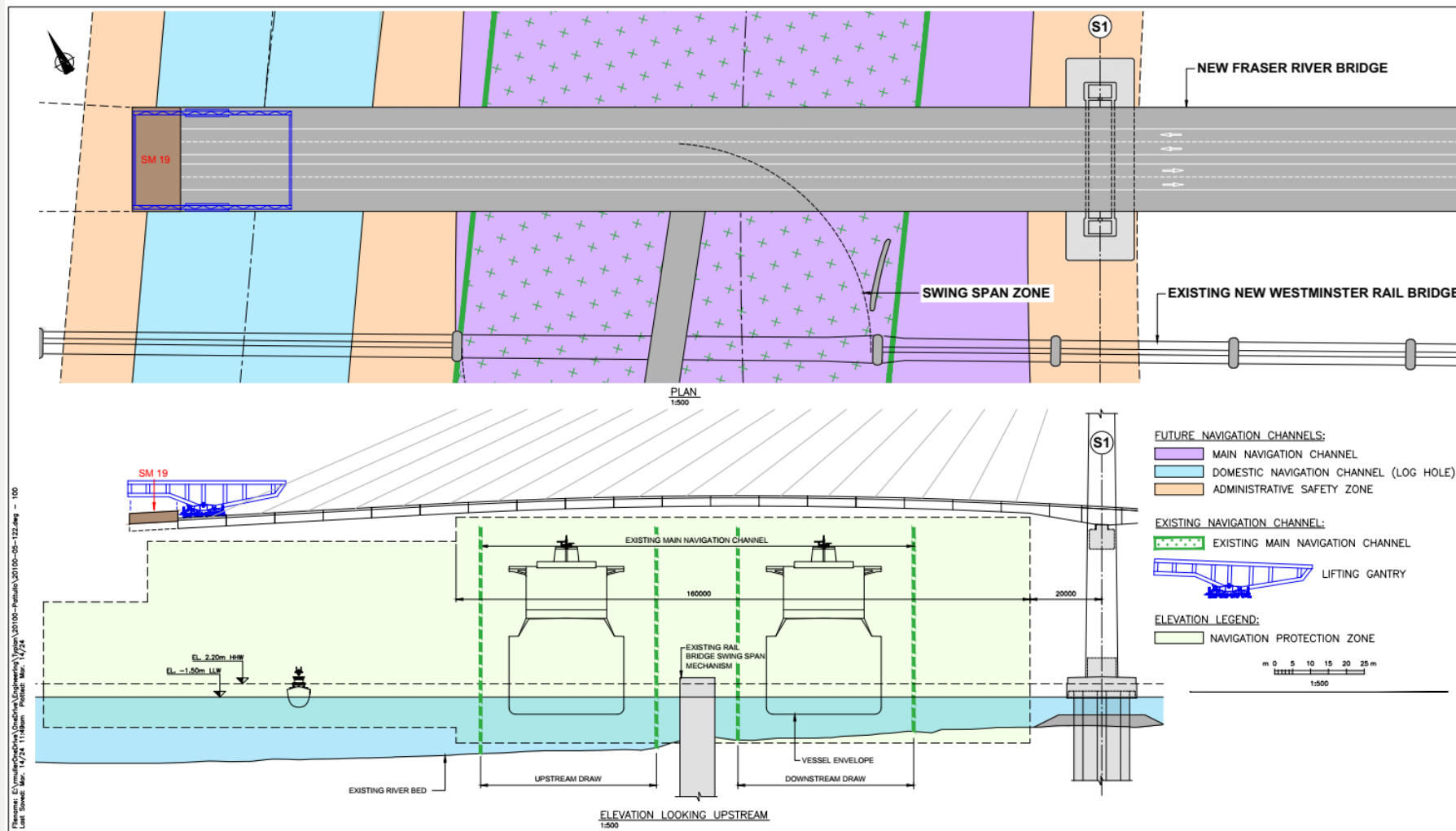
## Segment SM-018



- Starting Aug 18
- 2-3 week duration
- Restrictions in the domestic navigation channel (approx. 11 hours, cumulative)

# Construction Staging – Cantilever Construction

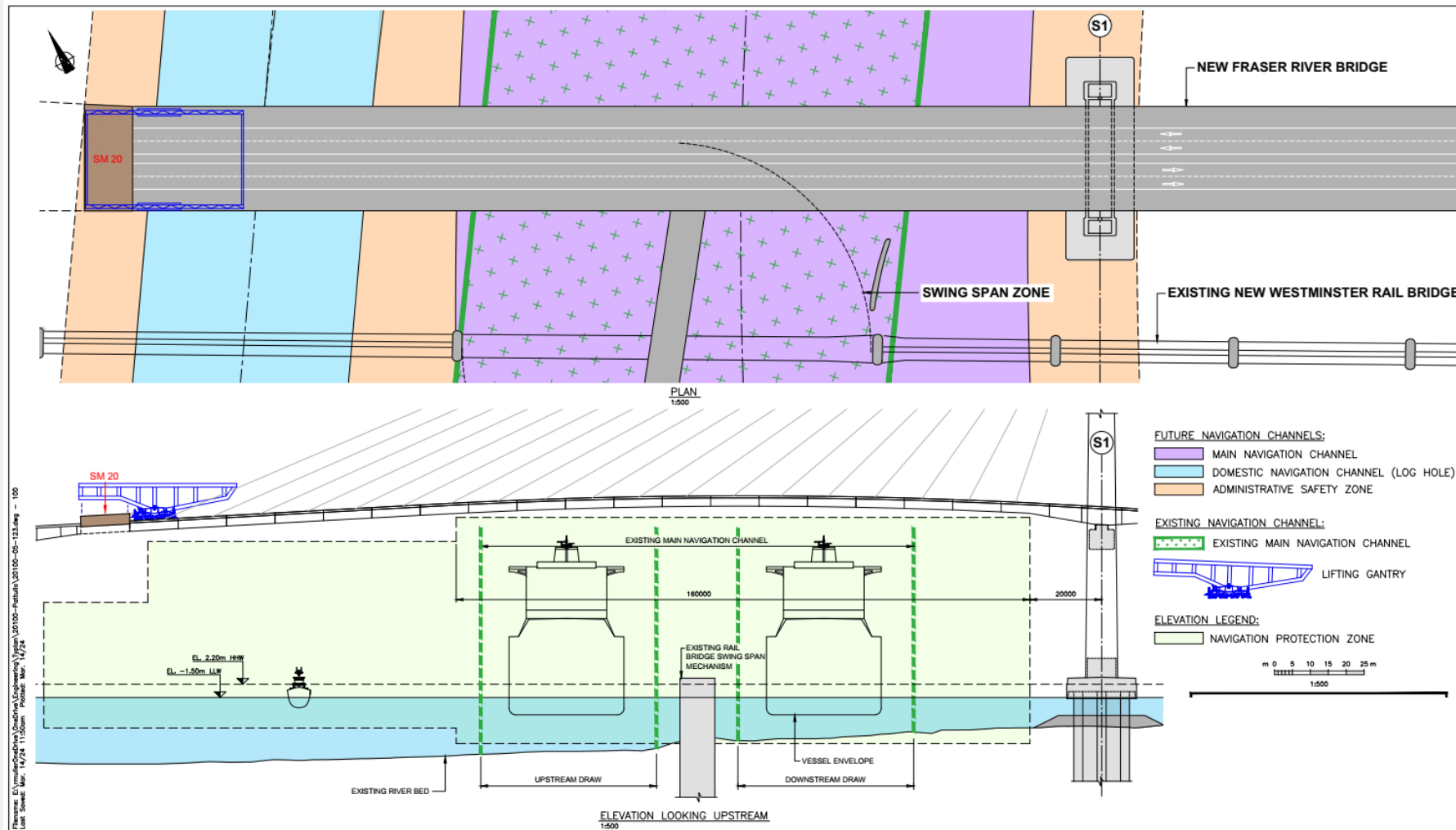
## Segment SM-019



- Starting Sep 2
- 2-3 week duration
- Partial restriction to navigation (approx. 11 hours, cumulative)

# Construction Staging – Cantilever Construction

## Segment SM-020



- Starting Sep 24
- 2-3 week duration
- No restrictions to navigation (approx. 11 hours, cumulative)



# Next Steps

**Ongoing NAVWARNs to be provided**

**Next Marine Users Working Group:**

- July 31, 2025