



Marine Users Working Group

Presented By: Fraser Crossing Partners and
Transportation Investment Corporation

April 24, 2025

Welcome

- Review of March 27 Meeting Minutes
- Navigation Log
- Project Update
- River Monitoring Update
- 4 Week Look-Ahead Schedule
- Roundtable Discussion
- Next Steps

Review of Meeting Minutes

March 27, 2025

Meeting Minutes – March 27, 2025

- FCP provided a Project update:
 - Back span with end span connection likely to be made the 2nd week of April
 - Precast panel installation and girder erection continues in both New Westminster and Surrey
 - S1 trestle now moved to moorings off the foreshore of the AMIX property
- FCP provided a demolition plan update:
 - Bridge removal being planned in 3 stages: Bridge deck removal, steel truss removal, and in-river pier removal
 - Alternative approach being considered for removal of the above water portion of the in-river piers to limit interference to navigation, reduce time on the water and minimize impacts on navigation and navigational channels
- FCP provided a 4-week look-ahead:
 - Segment SM-011 to start April 10 (2-3 weeks duration) - Estimated 11 hours of restrictions in the upstream draw
 - Segment SM-012 scheduled to start end of April (2-3 weeks duration) – afterwards, activity will move to the administrative safety zone and then the domestic channel
 - Current methodology should be maintained, as it has worked well so far
- Round Table:
 - With the onset of freshet, the capacity to move wood up-river through the domestic channel is limited, so more communications into May will be needed

Navigation Log

Marine Occurrences as a Result of the Project

**No updates to report*

Project Update

Works in Progress

Project Update

S1 Tower and Cantilever Construction



Photo 1: Main span construction south-west facing



Photo 2: Halfway cable stays west facing

Project Update

South Approach Girder Installation



Photo 3: South Approach girder and deck panel installation



Photo 4: South Approach-Completion of deck panels

Project Update

N1 Tower and North Approach Girder Installation



Photo 5: Barge and crane positioning next to N1 Tower to support girder installation

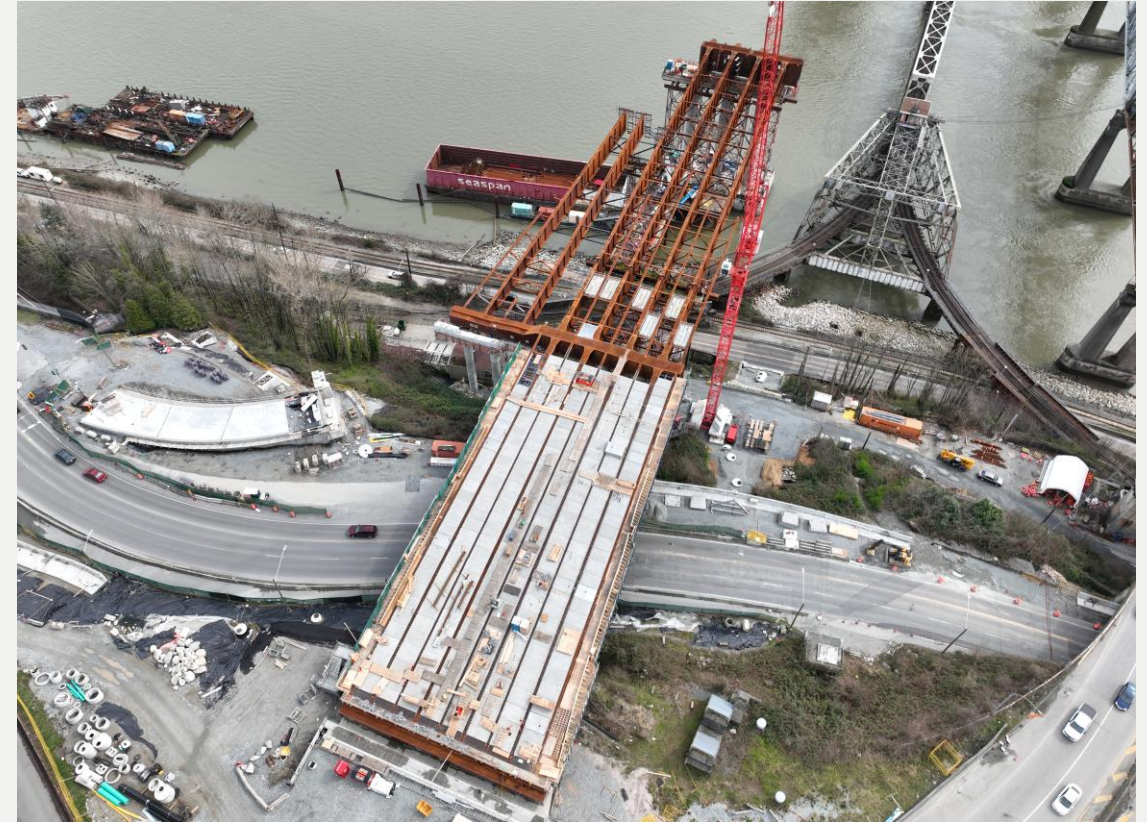
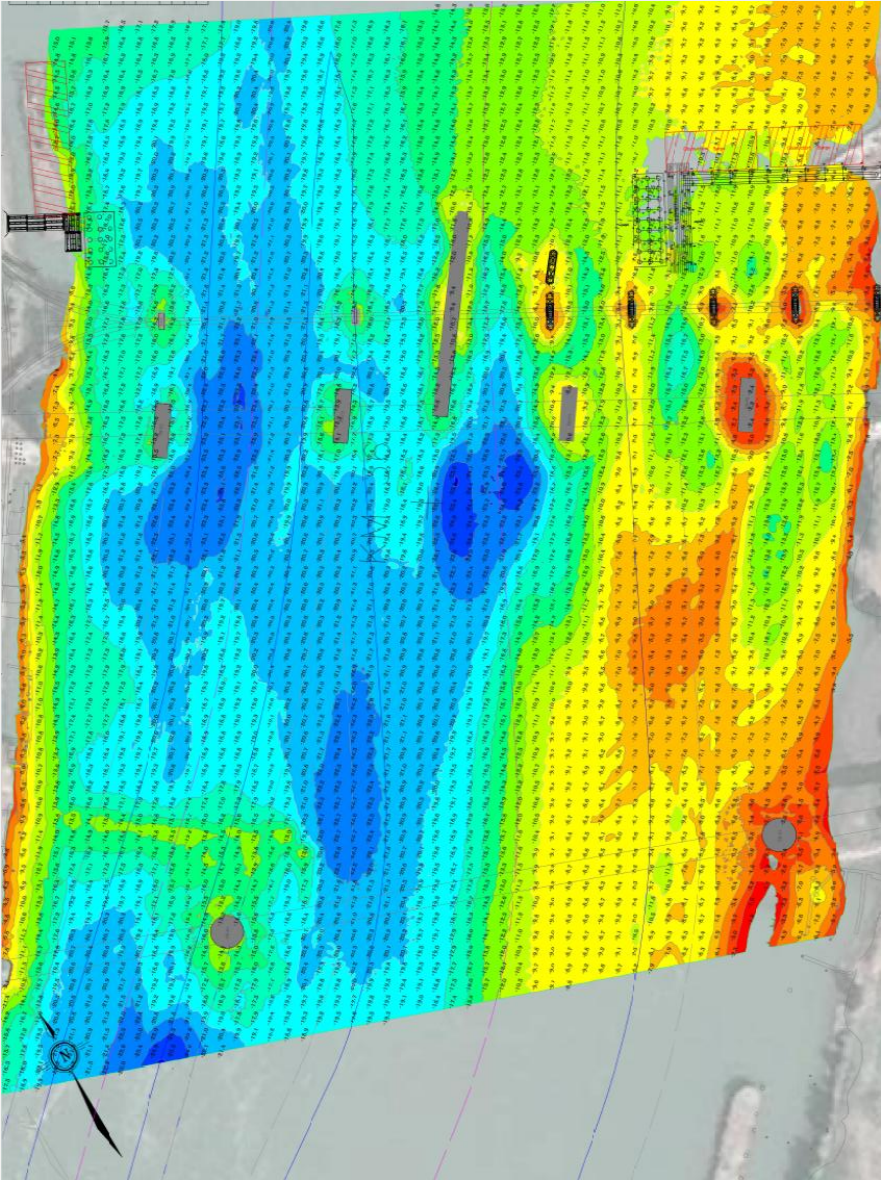


Photo 6: Ongoing girder and panel installation for the North Approach

River Monitoring Update

Monitoring Results

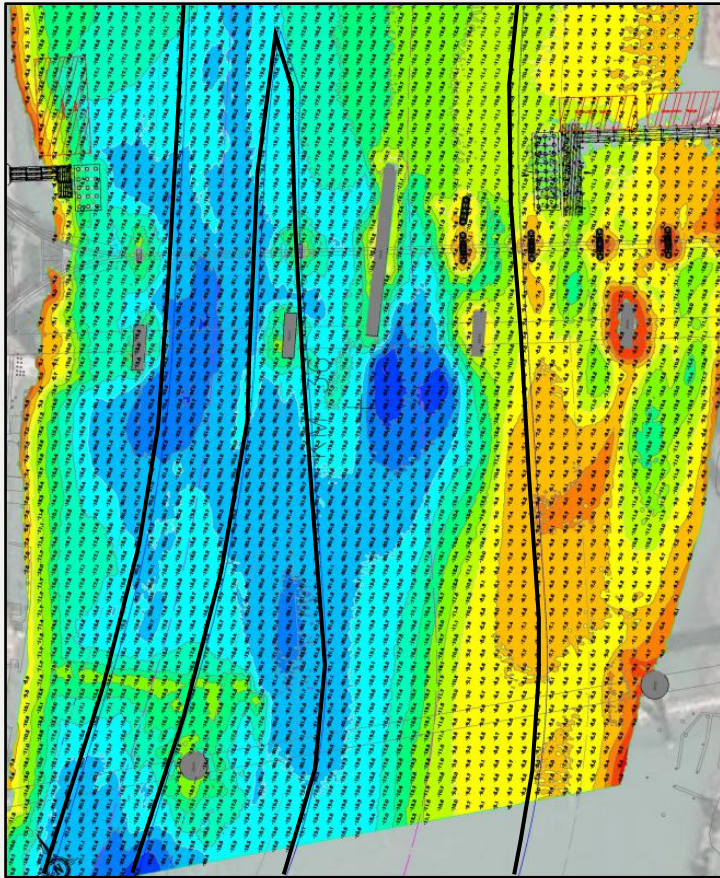
Bathymetry Monitoring Survey Results – March 17, 2025



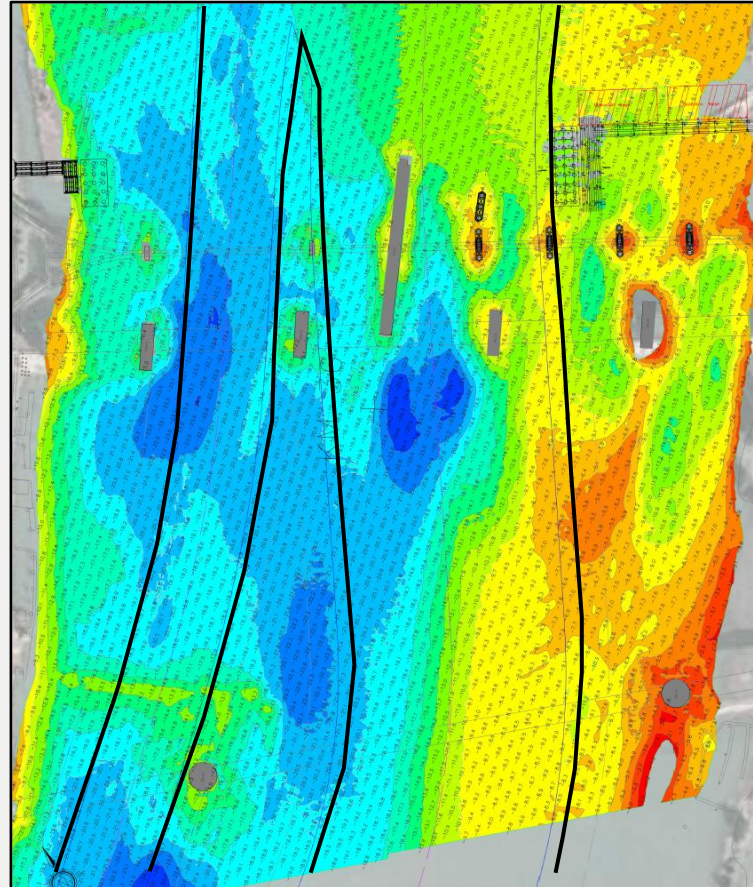
Elevations Table			
Number	Maximum Elevation	Minimum Elevation	Color
14	0.00	-2.00	Red
13	-2.00	-4.00	Orange
12	-4.00	-6.00	Yellow
11	-6.00	-8.00	Light Green
10	-8.00	-10.00	Green
9	-10.00	-12.00	Light Blue
8	-12.00	-14.00	Blue
7	-14.00	-16.00	Dark Blue
6	-16.00	-18.00	Very Dark Blue
5	-18.00	-20.00	Black
4	-20.00	-22.00	Dark Grey
3	-22.00	-24.00	Medium Grey
2	-24.00	-26.00	Light Grey
1	-26.00	-28.00	White

Bathymetry Results: Comparison of Survey Results - Sep 2024 to Mar 2025

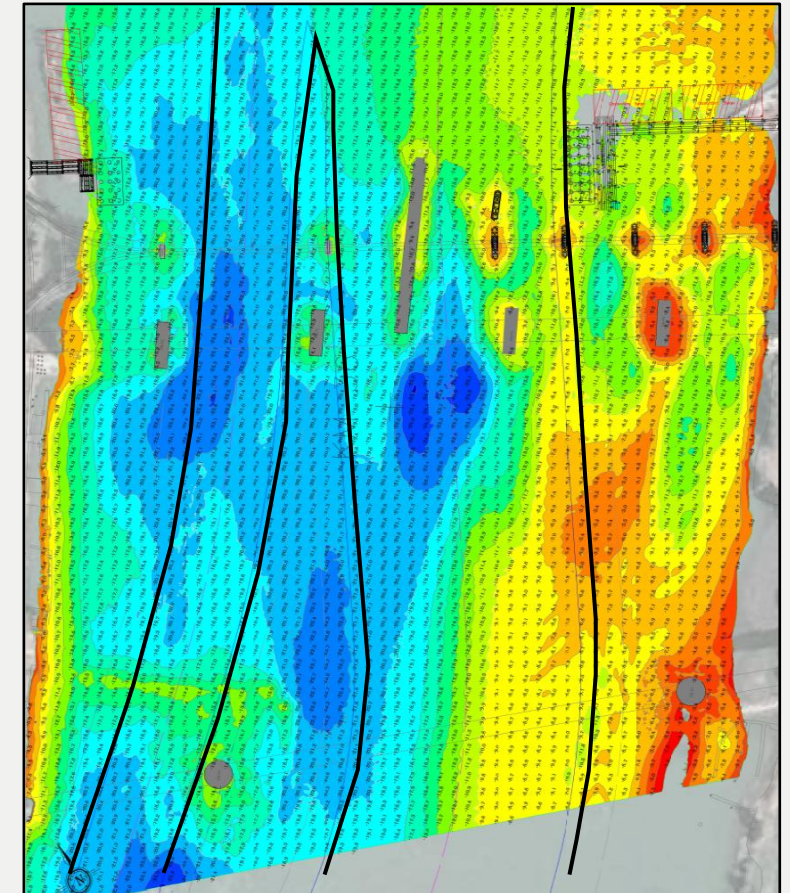
Elevations Table			
Number	Maximum Elevation	Minimum Elevation	Color
14	0.00	-2.00	Red
13	-2.00	-4.00	Orange
12	-4.00	-6.00	Yellow
11	-6.00	-8.00	Light Green
10	-8.00	-10.00	Green
9	-10.00	-12.00	Light Blue
8	-12.00	-14.00	Blue
7	-14.00	-16.00	Dark Blue
6	-16.00	-18.00	Very Dark Blue
5	-18.00	-20.00	Black
4	-20.00	-22.00	Dark Grey
3	-22.00	-24.00	Medium Grey
2	-24.00	-26.00	Light Grey
1	-26.00	-28.00	White



September 23, 2024



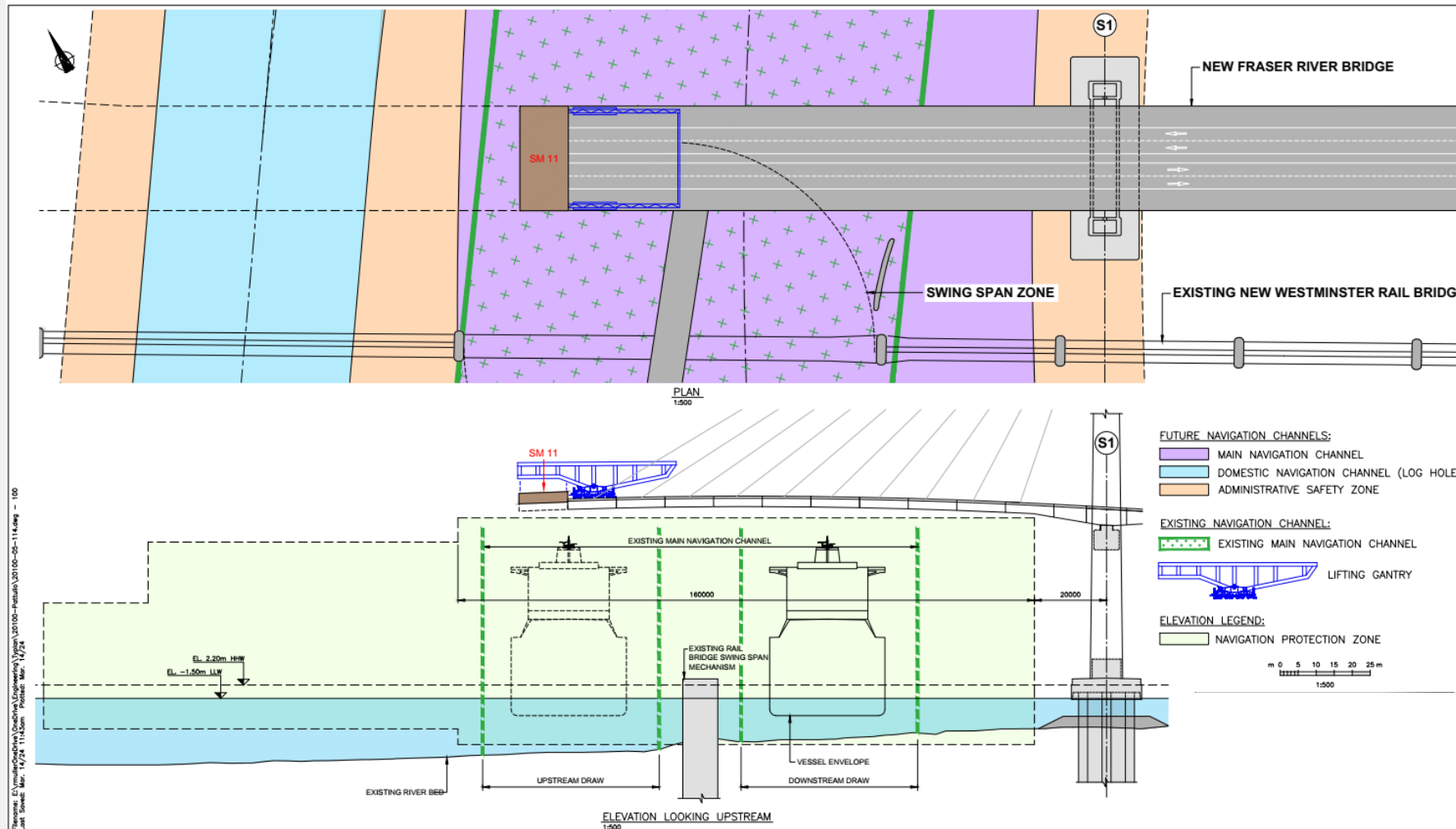
February 10, 2025



March 17, 2025

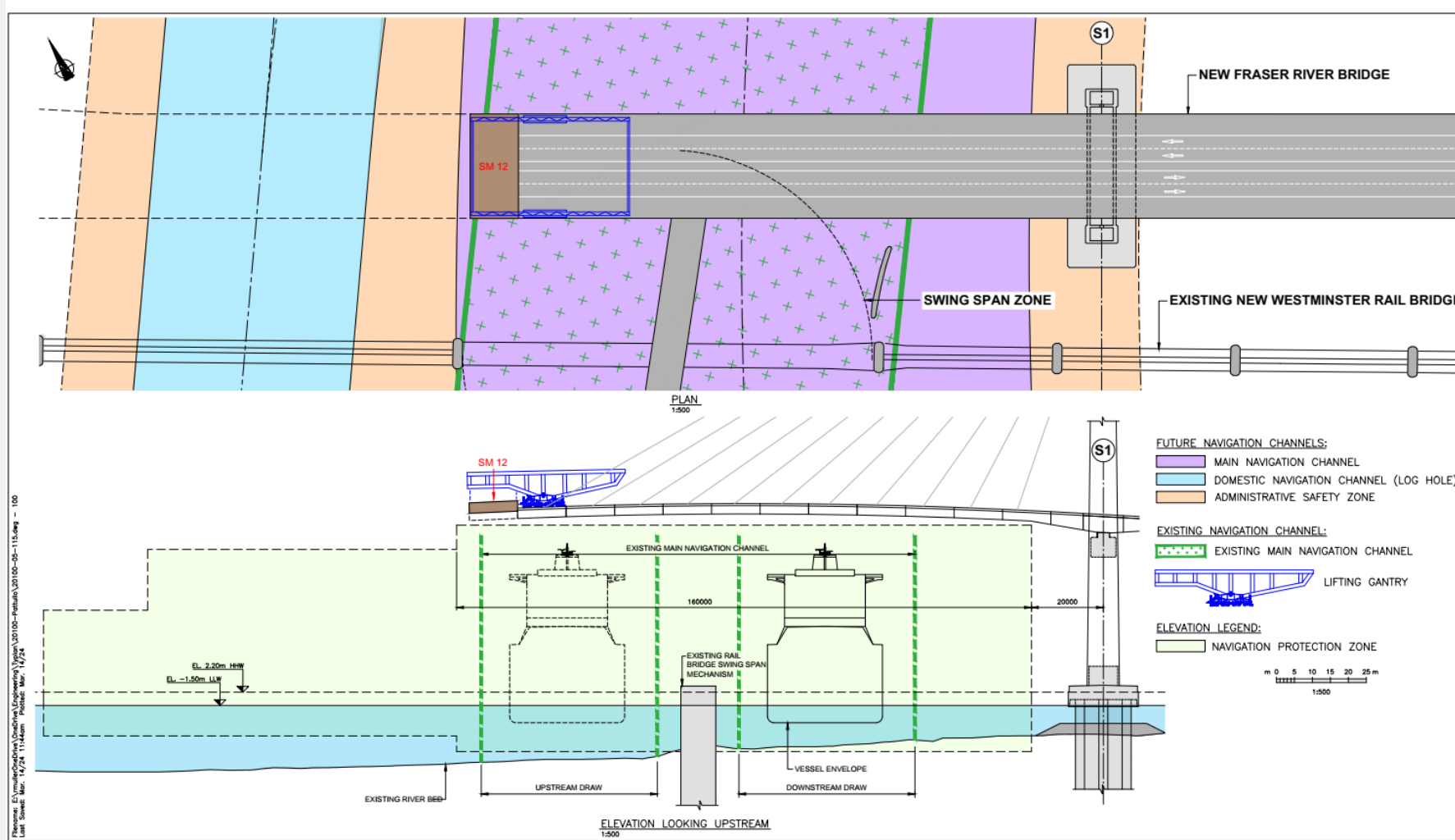
4-Week Look-Ahead / Construction Staging

Construction Staging – Cantilever Construction Segment SM-011



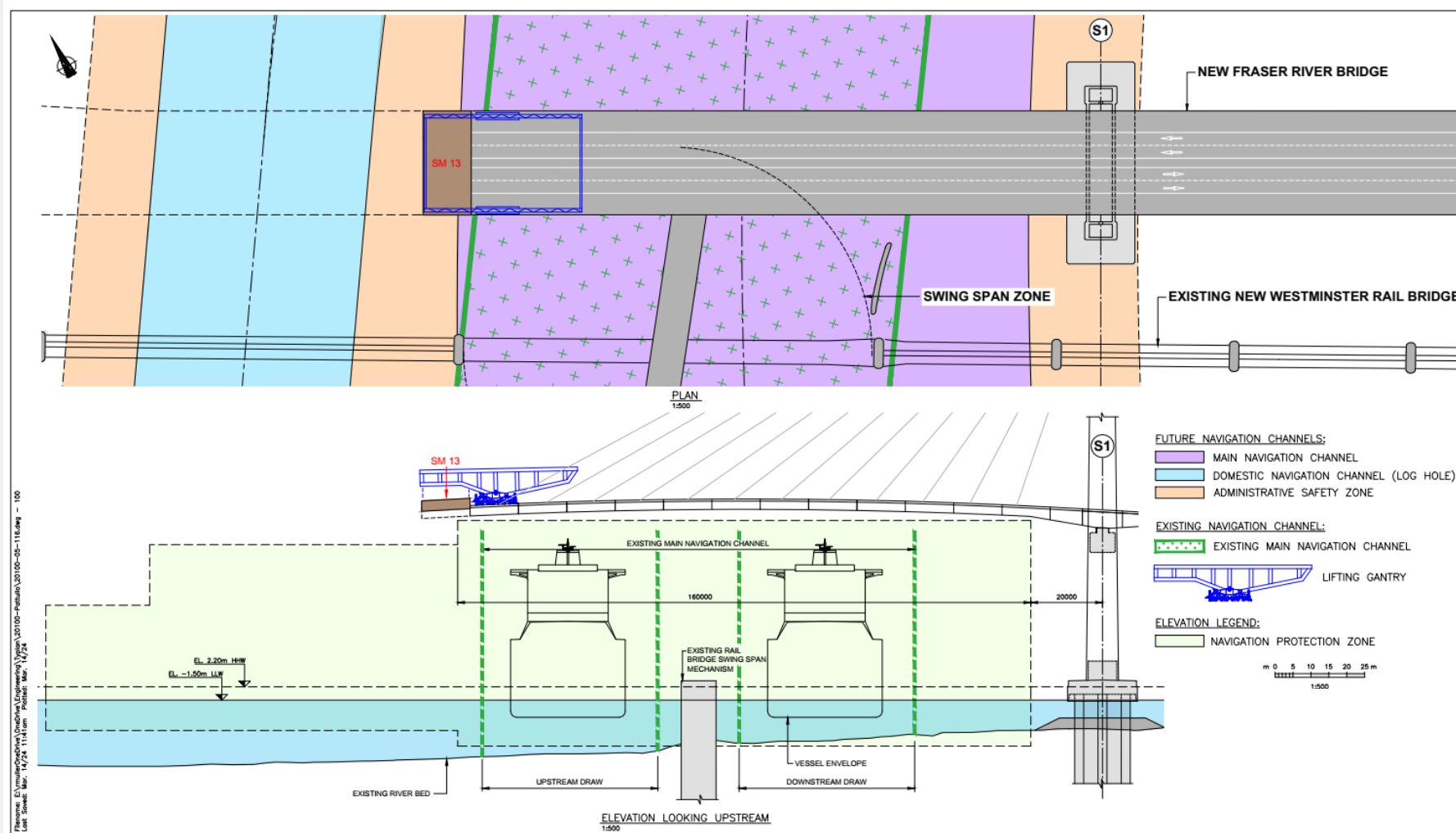
- Starting April 23
- 2-3 week duration
- Restrictions in the upstream draw (approx. 11 hours, cumulative)

Construction Staging – Cantilever Construction Segment SM-012



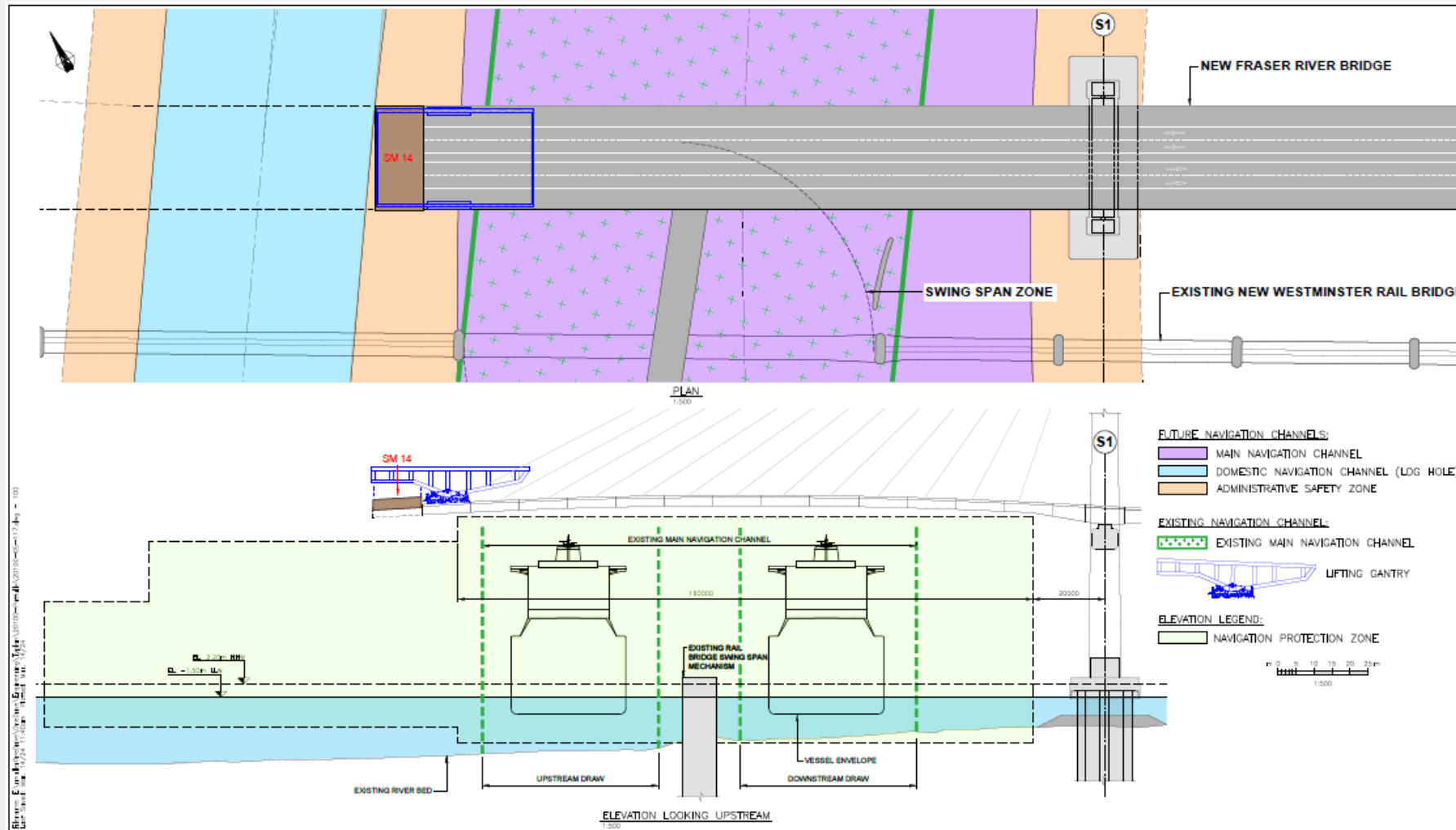
- Starting May 8
- 2-3 week duration
- Restrictions in the upstream draw (approx. 11 hours, cumulative)

Construction Staging – Cantilever Construction Segment SM-013



- Starting May 22
- 2-3 week duration
- No interference to navigation

Construction Staging – Cantilever Construction Segment SM-014



- Starting Jun 5
- 2-3 week duration
- No interference to navigation

Next Steps

Ongoing NAVWARNs to be provided

Next Marine Users Working Group:

- May 29, 2025