



# Marine Users Working Group

Presented By: Fraser Crossing Partners and  
Transportation Investment Corporation

February 27, 2025

# Welcome

- Review of January 30 Meeting Minutes
- Navigation Log
- Project Update
- River Monitoring Update
- 4 Week Look-Ahead Schedule
- Roundtable Discussion
- Next Steps

# Review of Meeting Minutes

## January 30, 2025

# Meeting Minutes – January 30, 2025

- FCP provided a Project update:
  - S1 Tower, cantilever construction, and girder installation ongoing (south girder installation close to main deck).
  - Steel installation ongoing at the N1 pier in New Westminster.
  - CN Pier 5 scour intervention completed and successful as it is not impacting marine use.
- FCP provided a demolition planning overview:
  - Description of demolition scope: deck removal, steel removal, and in-river pier removal.
  - Update on anticipated and alternative approaches to bridge demolition.
- FCP provided a river monitoring update:
  - Vessel draughts profiles were examined and found adequate for current and future navigational use.
- FCP provided a 4-week look-ahead:
  - Pier S2 soil densification work ongoing.
  - Marine access dock to be relocated, awaiting approvals.
  - SM-09 to SM-011 work ongoing with restrictions in the downstream draw.
  - Work on SM-012 planned to start in March/April with restrictions in the downstream draw.

# Navigation Log

## Marine Occurrences as a Result of the Project

*\*No updates to report*

# Project Update

## Works in Progress

# Project Update

## S1 Tower and Cantilever Construction

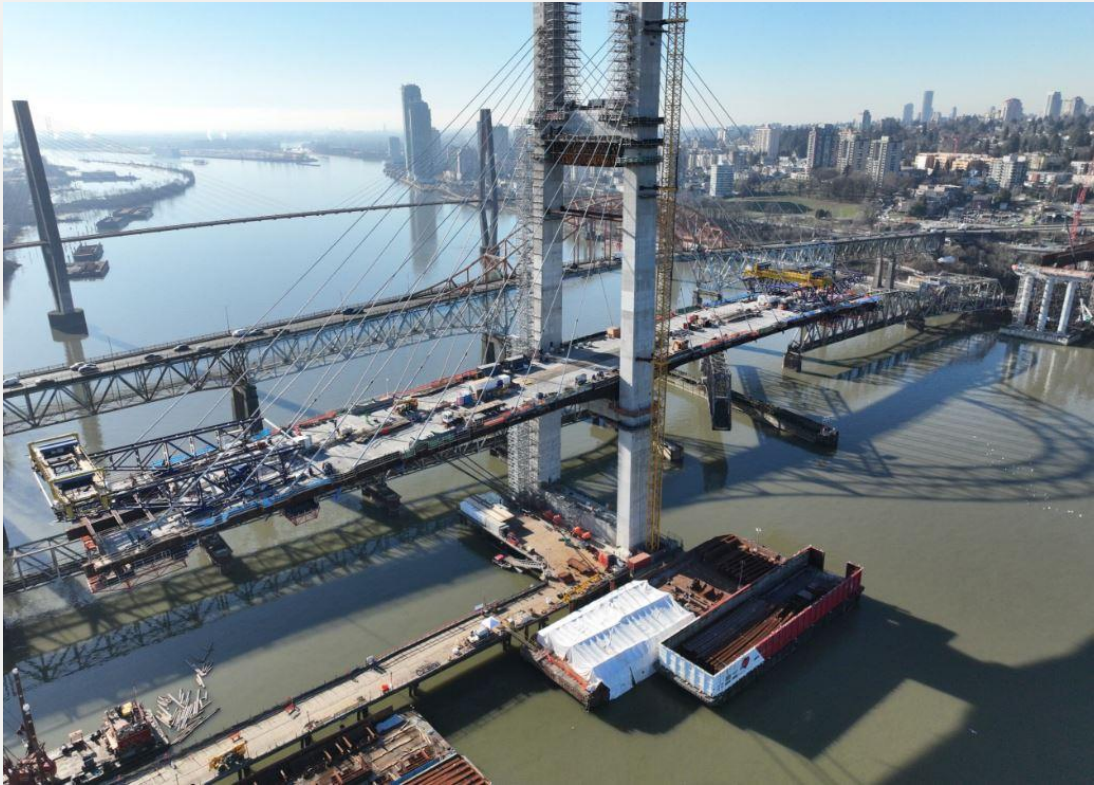


Photo 1: Pier S1, looking northwest



Photo 2: Pier S1, looking northeast

# Project Update

## South Approach Girder Installation



Photo 3: South Approach girder and deck installation



Photo 4: South Approach girder and deck installation



# Project Update

## N1 Tower and North Approach Girder Installation



Photo 5: Ongoing girder installation at N1 Tower

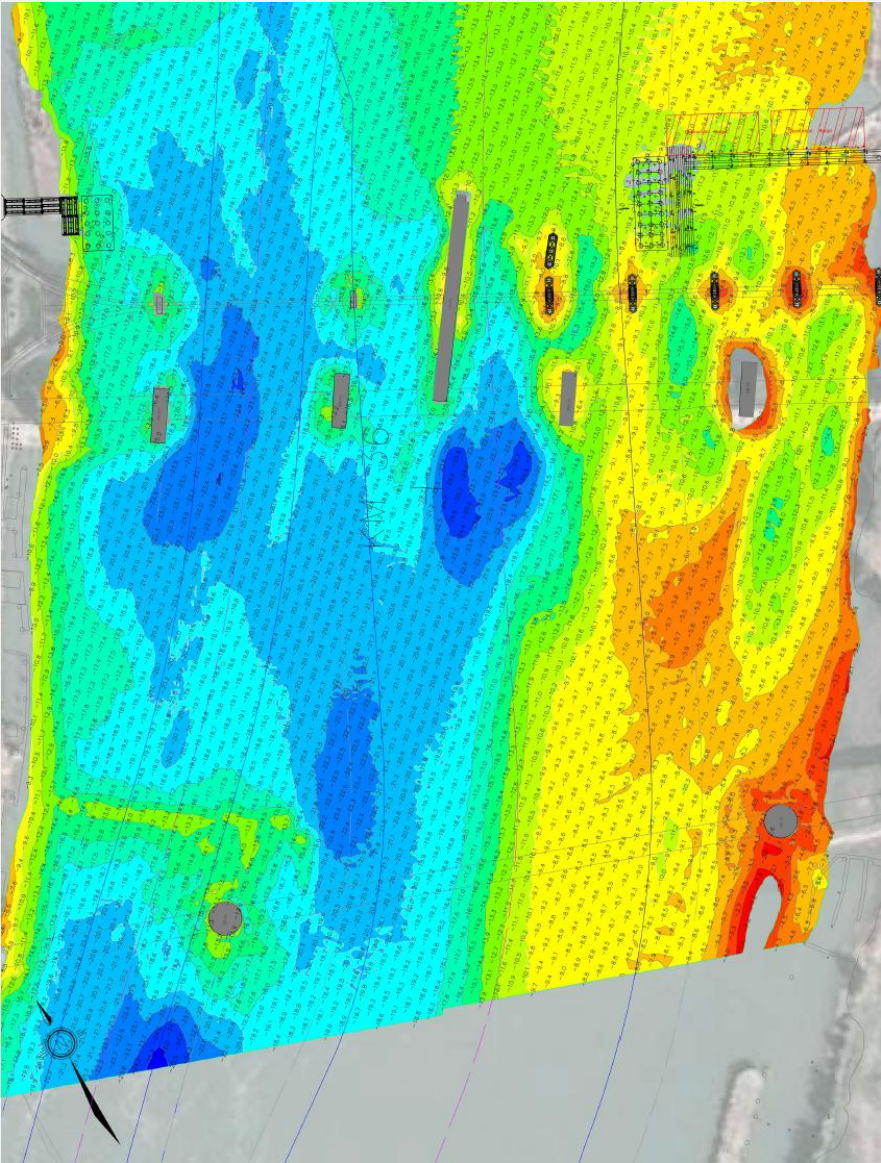


Photo 6: Ongoing girder installation for the North Approach

# River Monitoring Update

## Monitoring Results

# Bathymetry Monitoring Survey Results – February 10, 2025

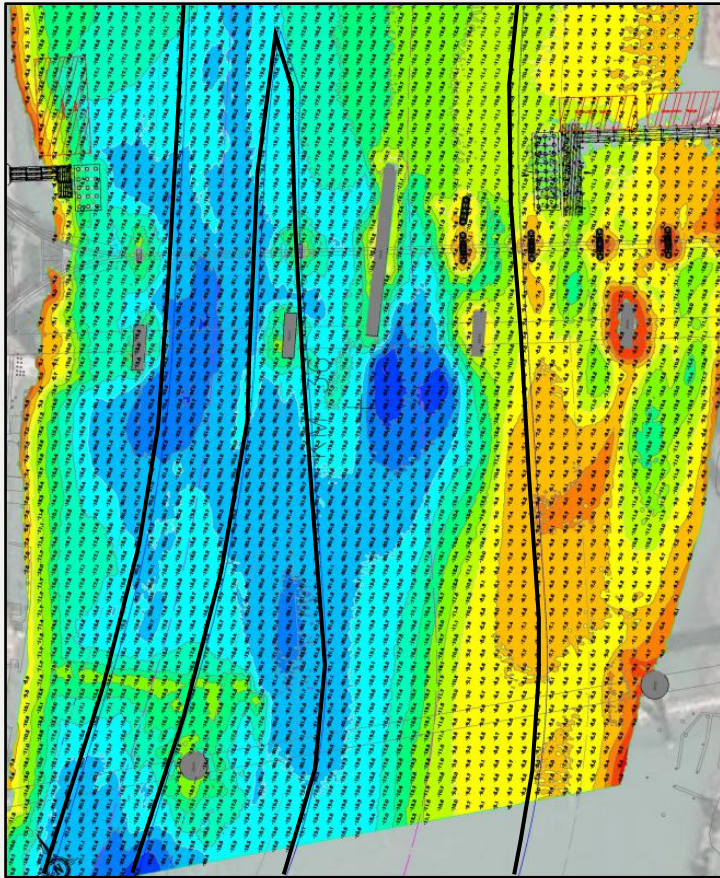


Elevations Table

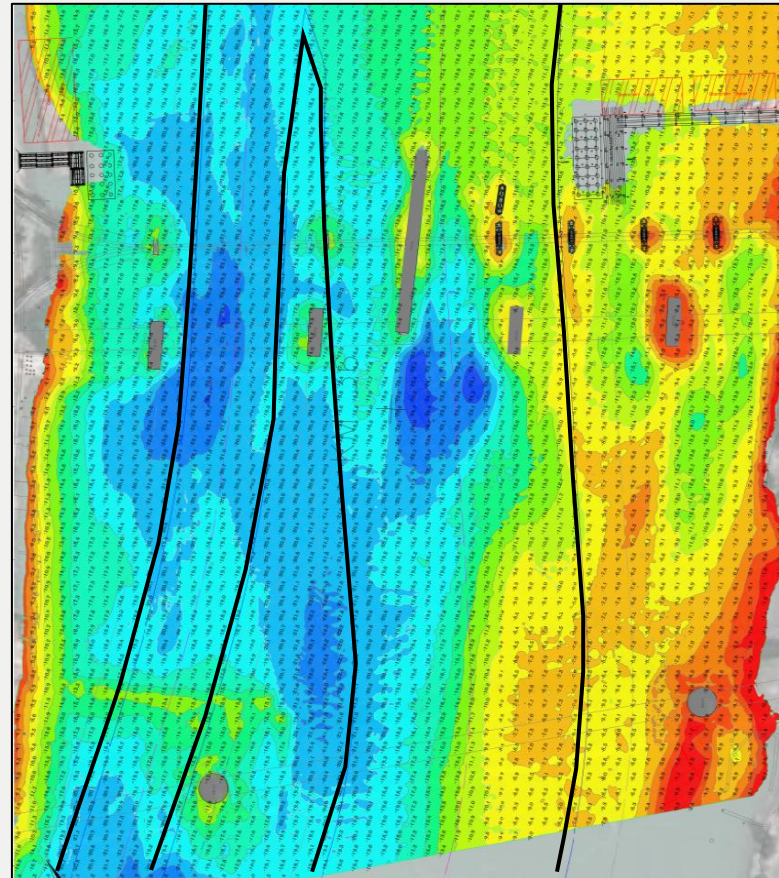
Number	Maximum Elevation	Minimum Elevation	Color
14	0.00	-2.00	Red
13	-2.00	-4.00	Orange
12	-4.00	-6.00	Yellow
11	-6.00	-8.00	Light Green
10	-8.00	-10.00	Green
9	-10.00	-12.00	Light Blue
8	-12.00	-14.00	Cyan
7	-14.00	-16.00	Blue
6	-16.00	-18.00	Dark Blue
5	-18.00	-20.00	Very Dark Blue
4	-20.00	-22.00	Black
3	-22.00	-24.00	Dark Grey
2	-24.00	-26.00	Black
1	-26.00	-28.00	Black

# Bathymetry Results: Comparison of Survey Results - Sep 2024 to Feb 2025

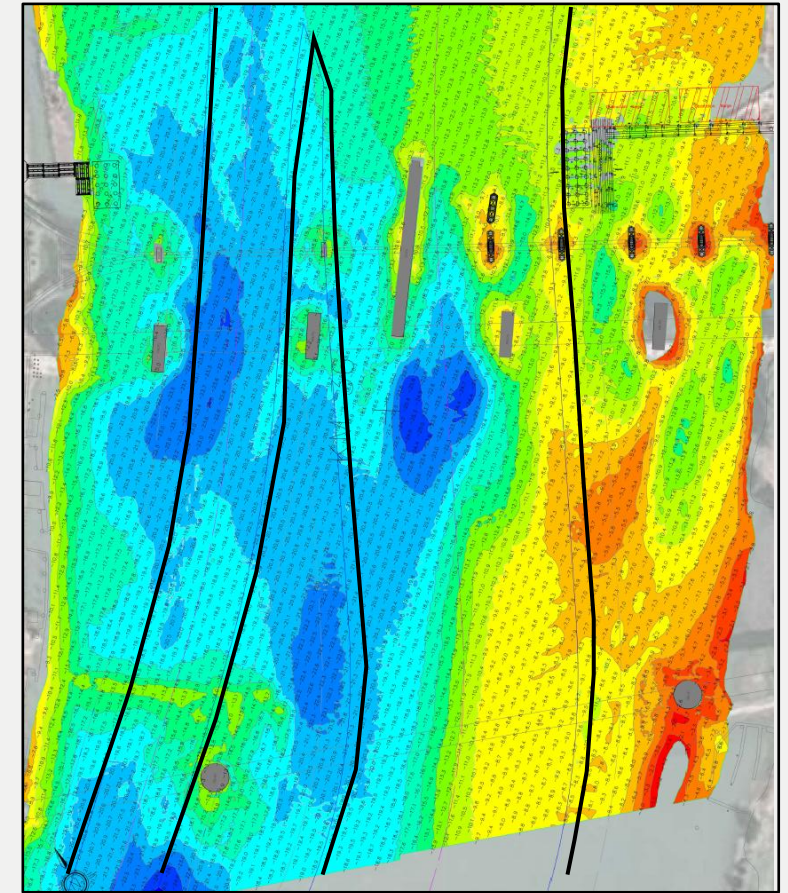
Elevations Table			
Number	Maximum Elevation	Minimum Elevation	Color
14	0.00	-2.00	Red
13	-2.00	-4.00	Orange
12	-4.00	-6.00	Yellow
11	-6.00	-8.00	Light Green
10	-8.00	-10.00	Green
9	-10.00	-12.00	Light Blue
8	-12.00	-14.00	Blue
7	-14.00	-16.00	Cyan
6	-16.00	-18.00	Teal
5	-18.00	-20.00	Light Blue
4	-20.00	-22.00	Blue
3	-22.00	-24.00	Dark Blue
2	-24.00	-26.00	Very Dark Blue
1	-26.00	-28.00	Black



September 23/24



November 18/24



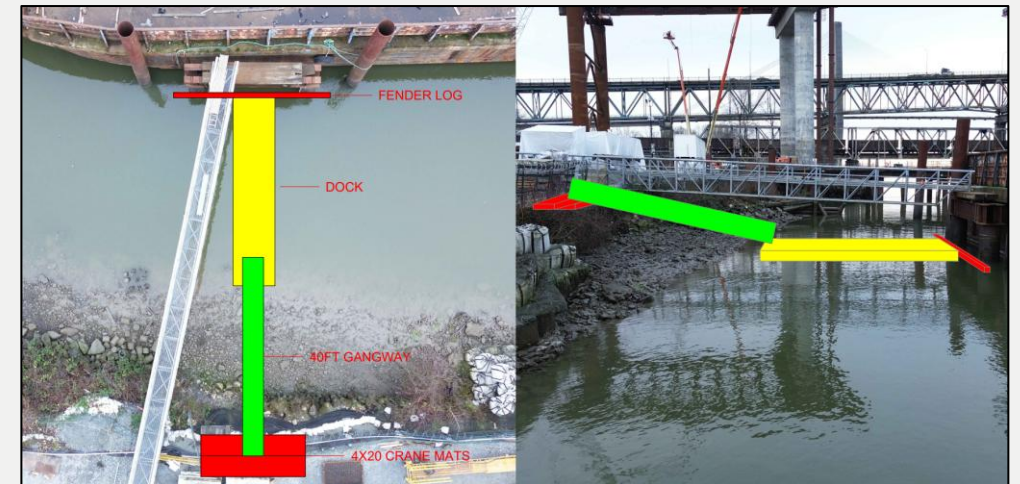
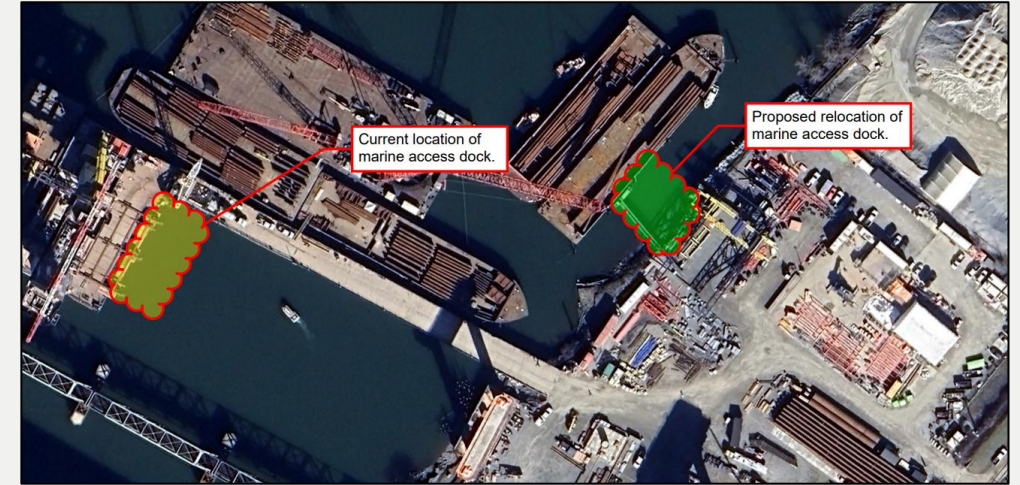
February 10, 2025

# 4-Week Look-Ahead / Construction Staging

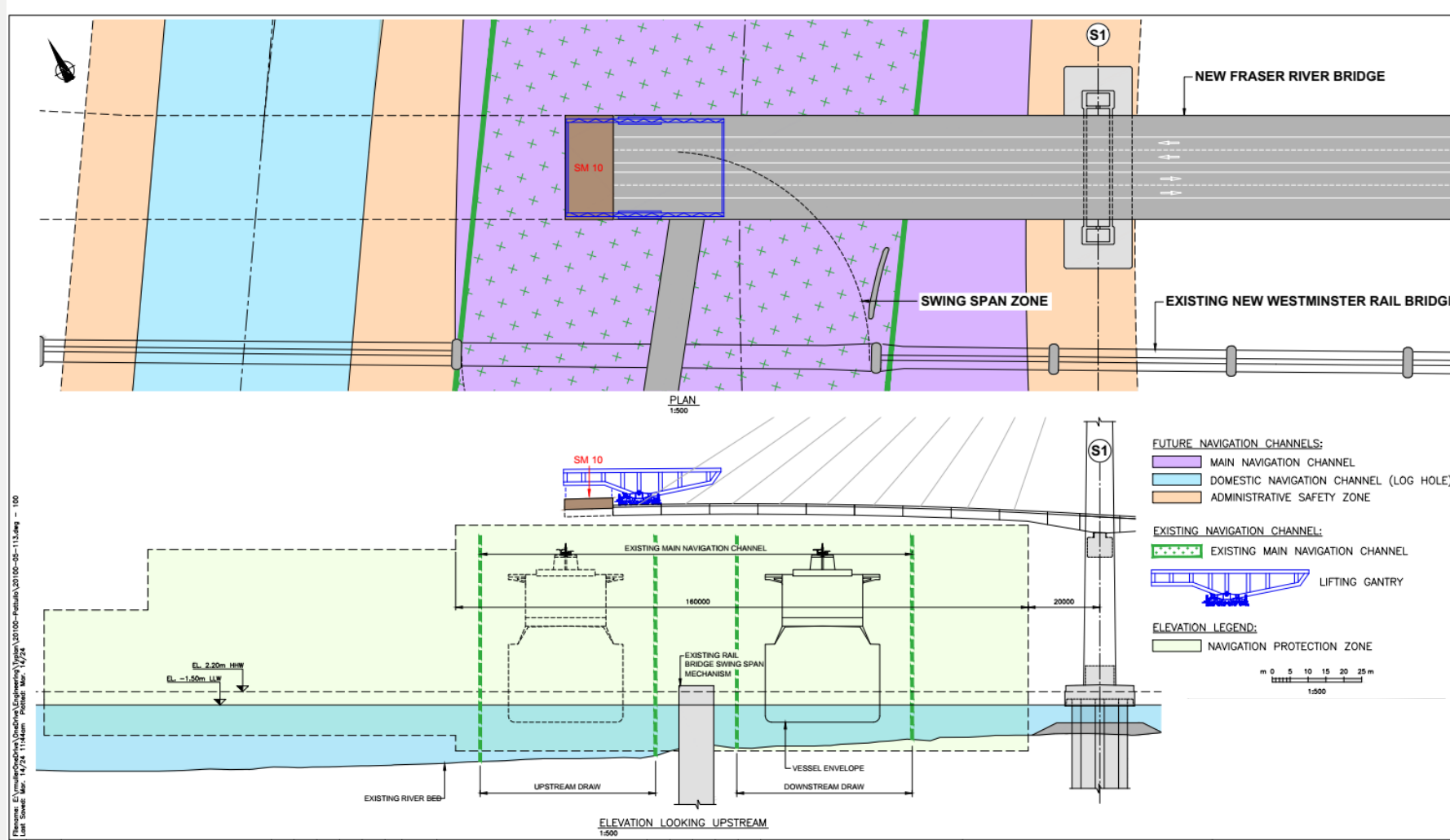
# Marine Access Dock Relocation



Photo: Current dock located on the trestle

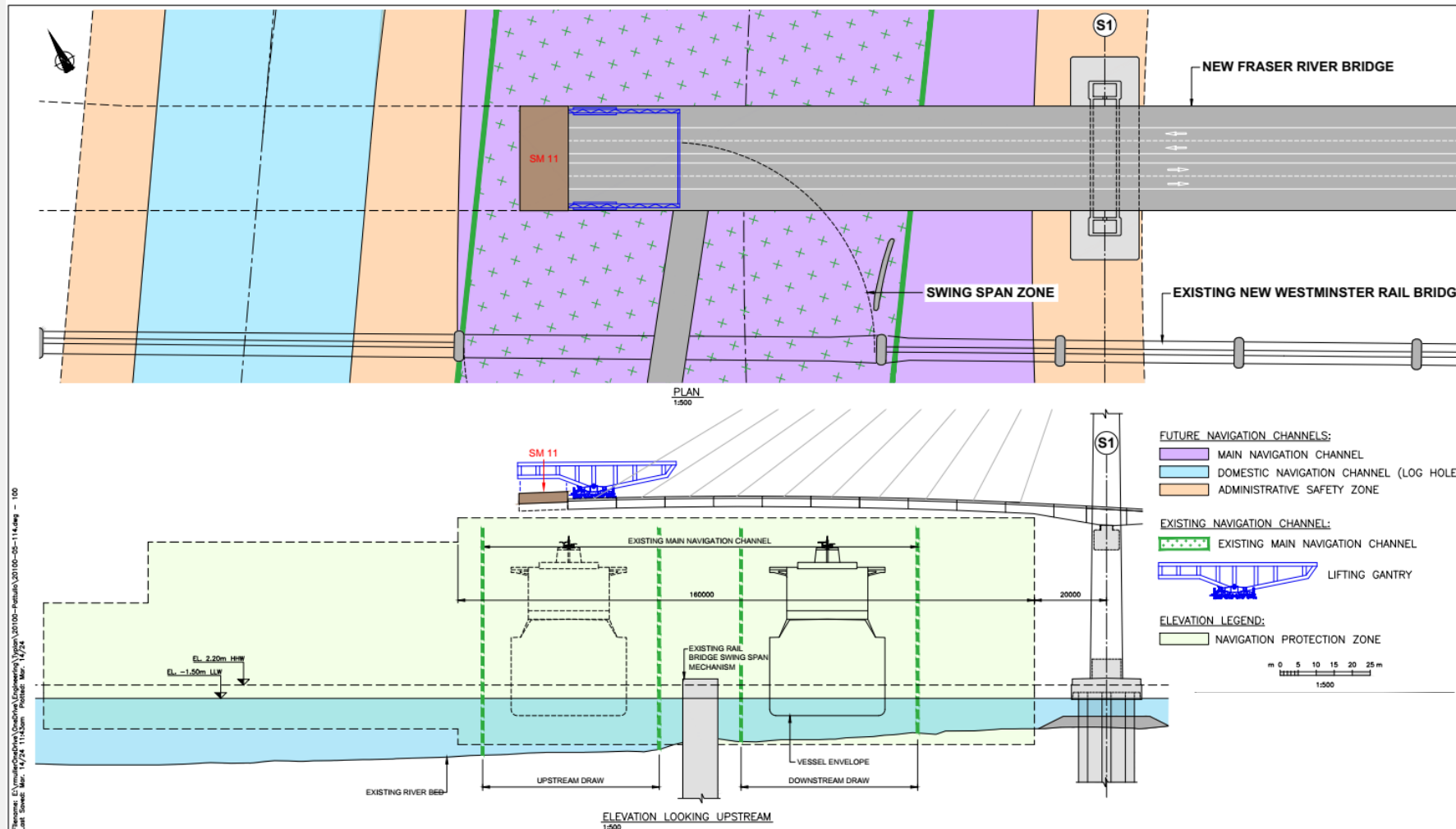


# Construction Staging – Cantilever Construction Segment SM-010



- Starting Feb 20
- 2-3 week duration
- Restrictions in the downstream draw (approx. 11 hours, cumulative)

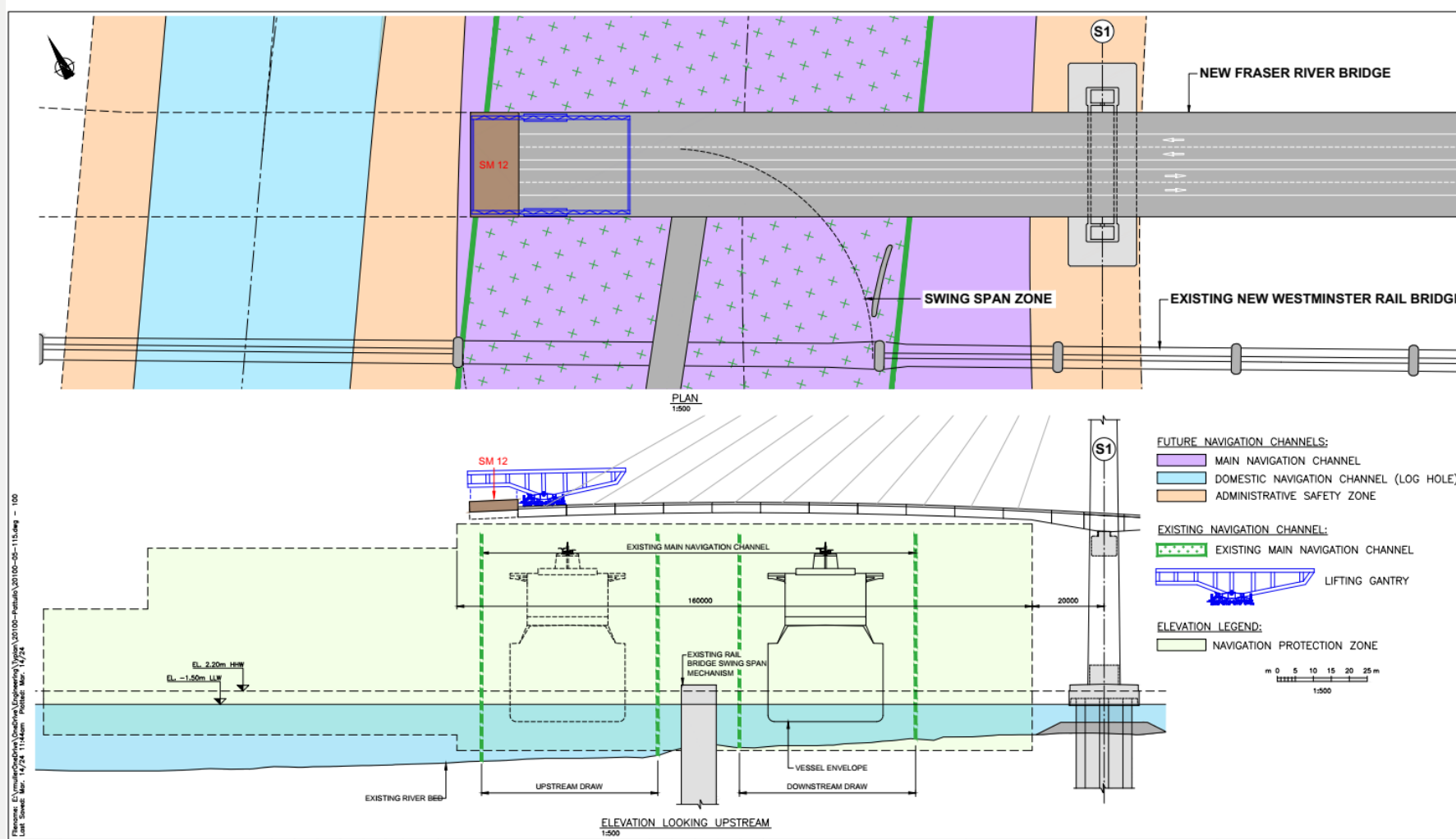
# Construction Staging – Cantilever Construction Segment SM-011



- Starting March
- 2-3 week duration
- Restrictions in the downstream draw (approx. 11 hours, cumulative)



# Construction Staging – Cantilever Construction Segment SM-012



- Starting March/April
- 2-3 week duration
- Restrictions in the downstream draw (approx. 11 hours, cumulative)

# Next Steps

**Ongoing NAVWARNs to be provided**

**Next Marine Users Working Group:**

- March 27, 2025